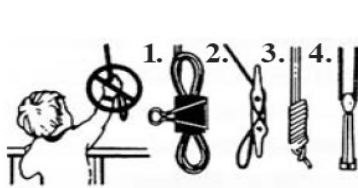


Woven Wood Shades

Installation Instructions

www.awardblinds.com

Congratulations on your woven wood shade. Your blind has been custom made to your specifications and is one of the finest window treatments available. Before you unwrap your shades, please take a few moments to read these instructions. With careful installation and periodic cleaning, your shade will provide you with many years of trouble free operation.



WARNING!

To avoid possible strangulation, keep cords out of reach of children. Use these devices.

1. Clamp or clothes pin
2. Cleat
3. Tie the cord to itself
4. Tie-down device

Your shade includes the following:

- Two installation brackets
- Mounting screws
- Auxiliary support brackets if your shade requires them

To install your shade you will need the following tools:

- Pencil
- Screwdriver with medium sized blade
- Drill
- 7/64" drill bit or hammer and finishing nail
- Scissors
- Level (optional)
- 1/16" drill bit

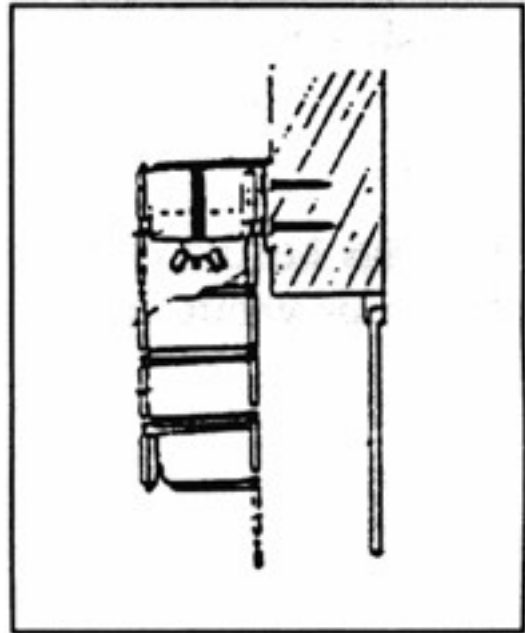
Suggested Fasteners (not included):

- Anchors, plastic or lead anchors. Plastic anchor insert for lightweight shades only, in drywall, paneling, etc.
- Hollow wall anchors or hollow wall toggle bolt for heavy blinds.

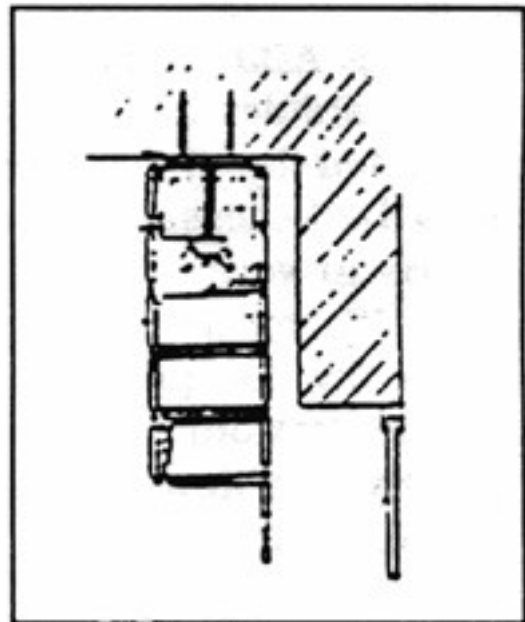
INSTALLATION INSTRUCTIONS

Your woven wood shade is custom made using the finest materials available. Each shade includes all necessary installation hardware and has been checked for operation and alignment.

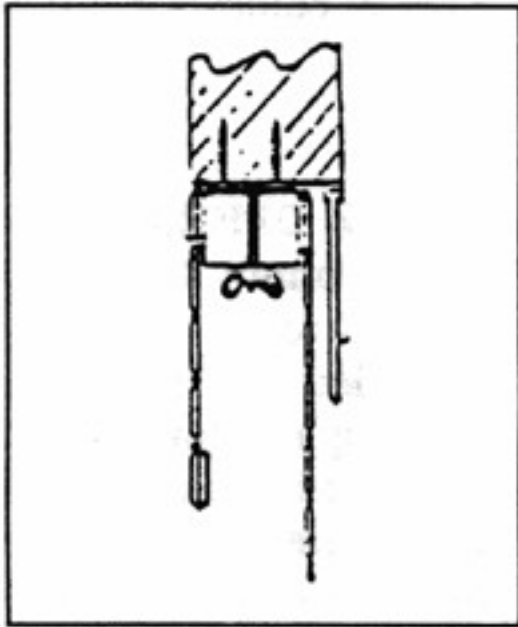
For an Outside Wall Mount: Shade is measured and assembled to overlap the window casing. The mounting brackets are then installed to the wall by means of screws or toggle bolts placed at opposite corners. Remove wing nuts. The screws slide through the Headrail slots and are secured with wingnuts.



For an Outside Ceiling Mount: Shade is measured and assembled to overlap the window casing. The mounting brackets are then installed to the ceiling by means of screws or toggle bolts placed at opposite corners. Remove wingnuts. The screws slide through the Headrail slots and are secured with wingnuts.



For an Inside Mount: Shade is measured and assembled to fit inside the window casement. Attach the mounting brackets to the top (ceiling) of the window opening. Remove the wingnuts. The screws slide through the Headrail slots and are secured with wingnuts.

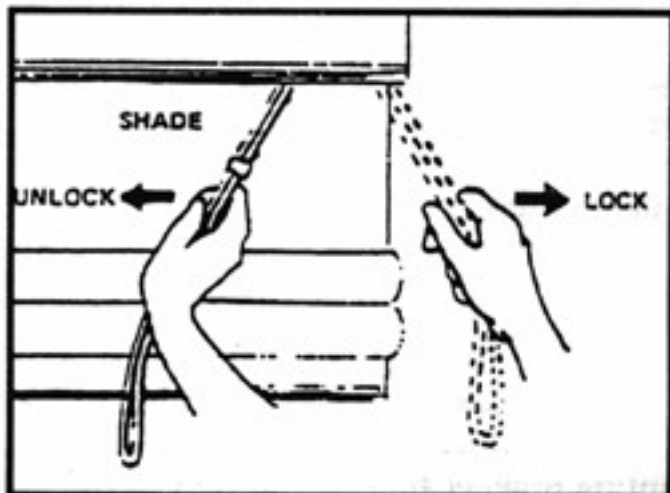


OPERATION AND ADJUSTMENT

Components and materials used on these woven wood shades have been specifically selected. The wood slats retain the grain texture and irregularities inherent in natural wood of this type. The selection of pattern and yarns combines this natural wood with the most contemporary colors for a truly unique window fabric.

Shade Operation.

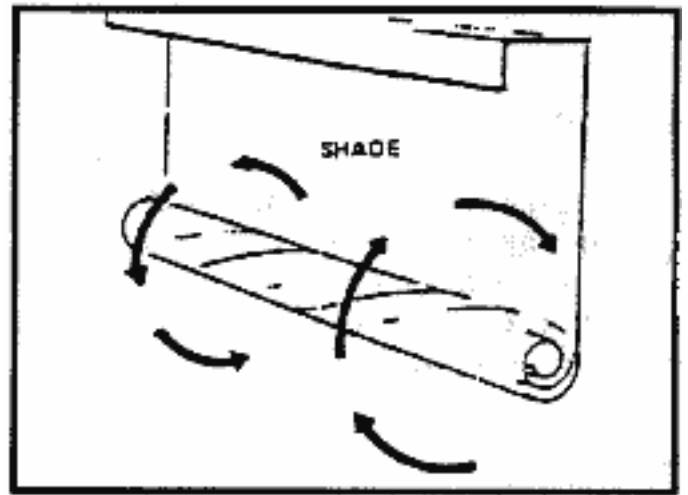
Both Roman & Roll-Up shades have the same basic hardware and operating procedure. Cords, whether installed on the left or the right side have the same locking mechanism. To raise the shade merely pull on the cord and release the cord when the shade is at the desired height. To lower the shade, pull the cord to the center of the shade with a slight tug. Then keeping tension on the cord at that angle slowly let the cord go up, thus lowering the shade. If the shade should bind, check the cord alignment over the pulley (under the valance).



Shade adjustment and alignment.

Your shade has been carefully inspected and adjusted by the factory, but minor adjustments may be necessary once it has been installed. The yarns in your woven wood shade are flexible enough to permit minor adjustment horizontally and vertically for proper alignment on your window. If the bottom of your shade becomes uneven, merely pull down on either side to stretch the yarn and align the shade.

If your shade doesn't lie flat against the wall or window, roll the shade tightly from the bottom and twist roll clockwise on one side, counter clockwise on the other, and this will align the yarns and slats. Should a strand of yarn slip off the edge of the shade, remove the strand from the top to bottom – this will in no way affect the strength of the shade.



Shade maintenance.

Clean by vacuuming.

IMPORTANT NOTES

If the mounting surface is metal, you must pre-drill holes for the screws. Use a 1/8" steel drill bit.

If the surface is brick, tile, stone, or concrete, it will be necessary to use a carbide drill and suitable anchors, plugs, or screws.

Plaster and wallboard need pre-drilled holes for anchors or plugs. Follow manufacturer's recommendations for these types of fasteners.