

# Custom Roller Essentials Shades



Installation Instructions

June 2025

## INSTALLATION INSTRUCTIONS

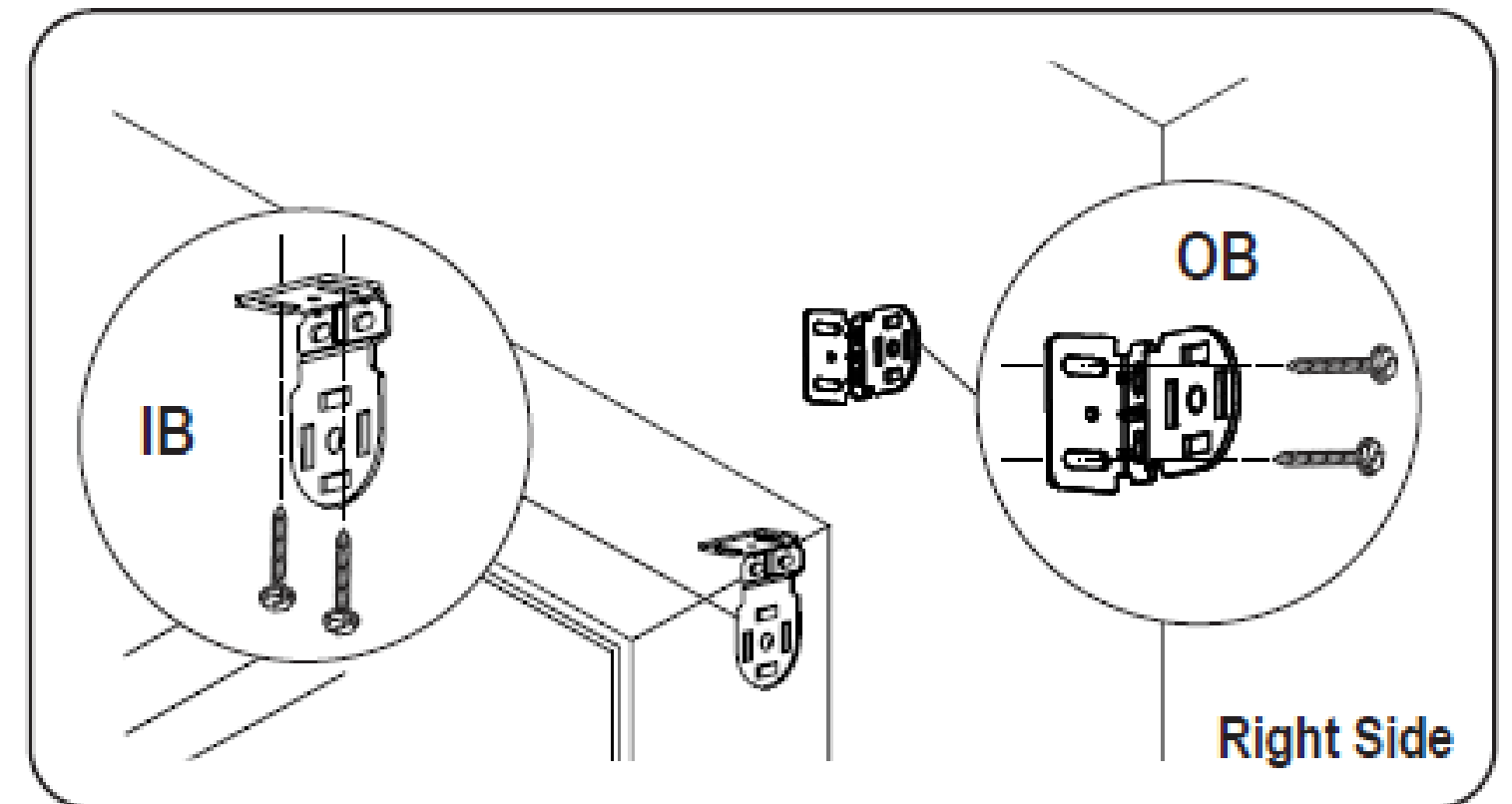
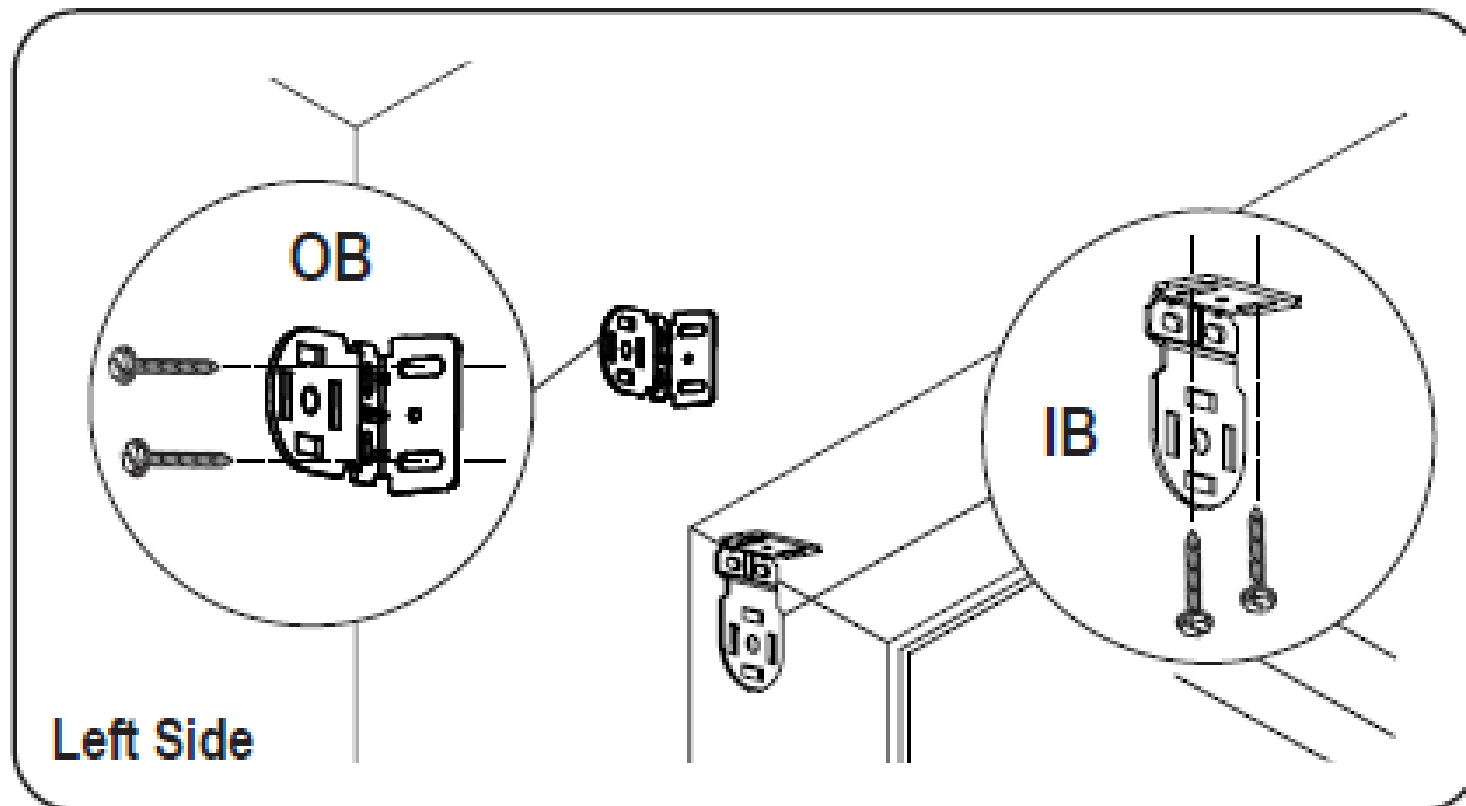
## ROLLER SHADES

Open Roll Shades  
Continuous Loop Control | Cordless | Automation

### 1. Install the Brackets

**Important:** Make sure the mounting surface is level. Brackets must be in line and level for shade to operate properly. Shim brackets if necessary.

#### 1a. Open Roll Tubes 1 1/2" to 2 1/2"



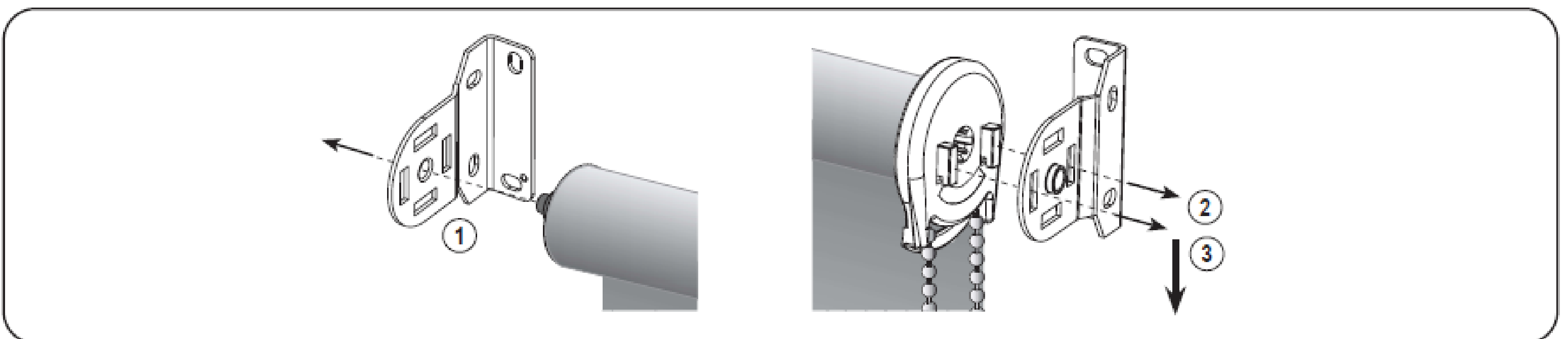
**Inside Mount (IB),** Install each bracket with two screws either through the side or up through the top. Make sure all brackets are leveled and aligned.

**Outside Mount (OB),** Secure each bracket with two screws through the side of the bracket. Make sure all brackets are level. Minimum 1 3/4 mounting surface height requirement.

## INSTALLATION INSTRUCTIONS

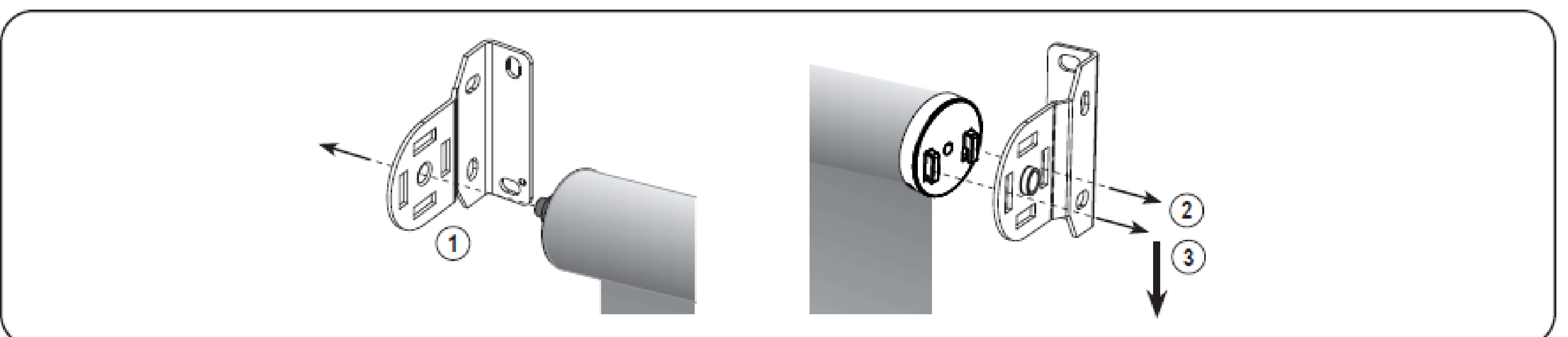
### 2. Install the Shade

#### 2a. Continuous Loop Control



1. Place the spring loaded pin end into the round hole of the bracket. Then, keeping the pin end secure in its bracket, (2) Insert the hooks on the clutch straight into the two slots in the bracket. Once the two hooks are through the slots, (3) gently pull downward on the hook side until the hooks have locked securely onto the bracket. The bottom of the clutch with chain loop should point straight down.

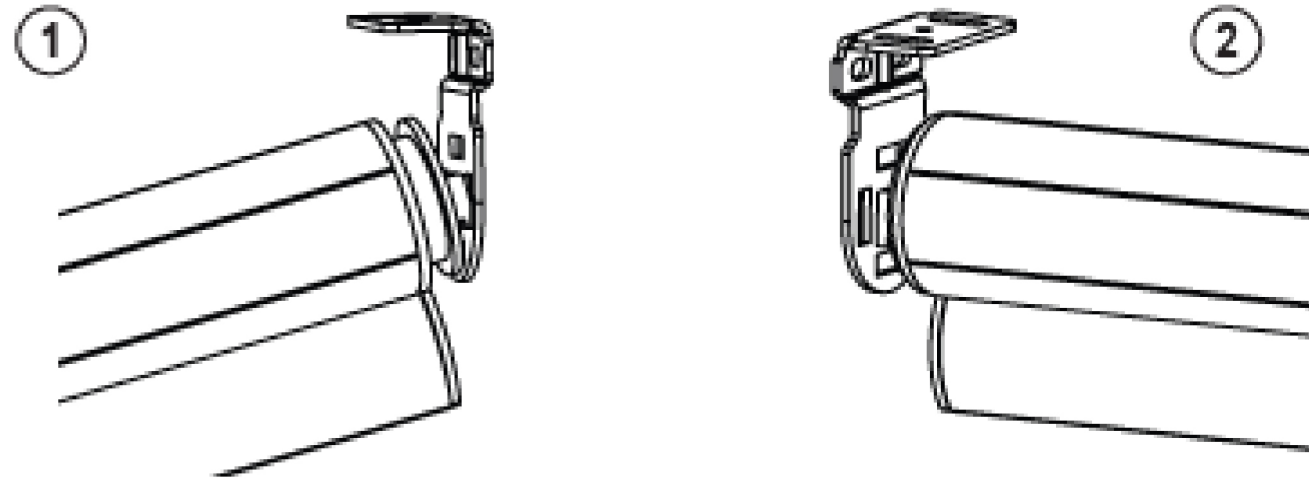
#### 2b. Motorization (Open Roll Tubes 1 1/2" to 2 1/2")



1. Place the spring loaded pin end into the round hole of the bracket. Then, keeping the pin end secure in its bracket, (2) insert the hooks on the motor head straight into the two slots in the bracket. Once the two hooks are through the slots, (3) gently pull downward on the motor until the hooks have locked securely to the bracket. The reset button of the motor should be facing down.

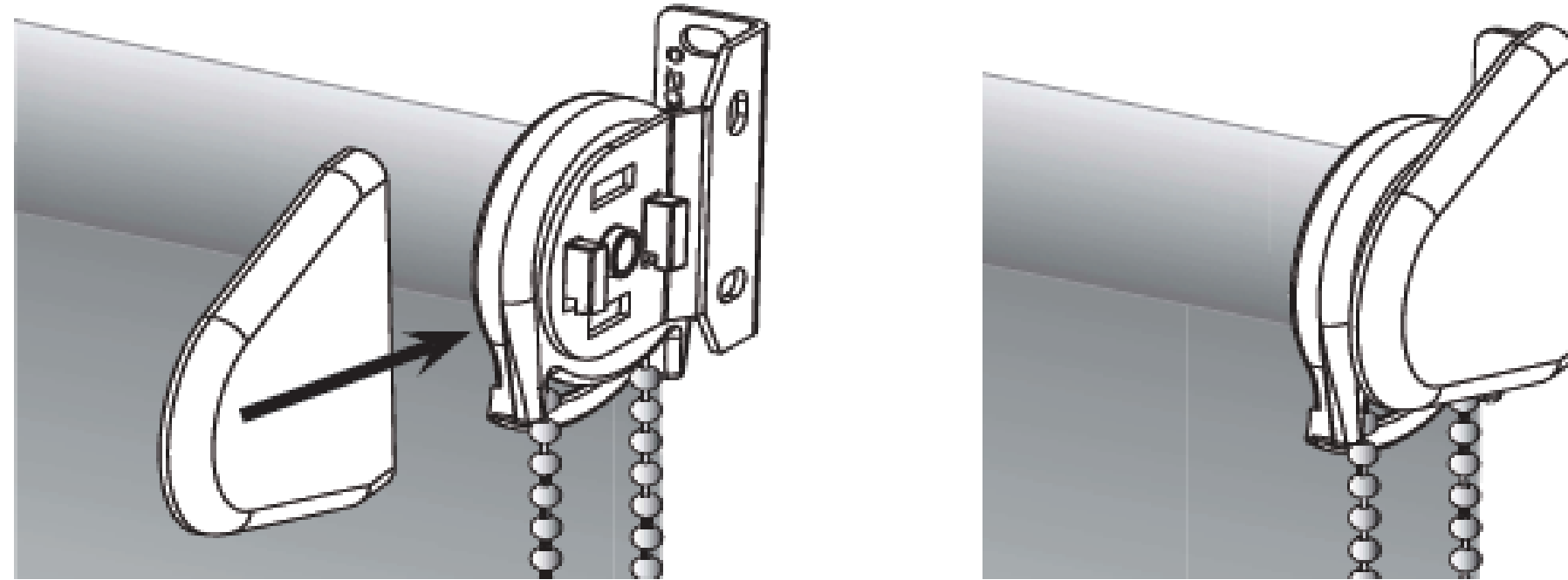
## INSTALLATION INSTRUCTIONS

### 2c. TouchLift™

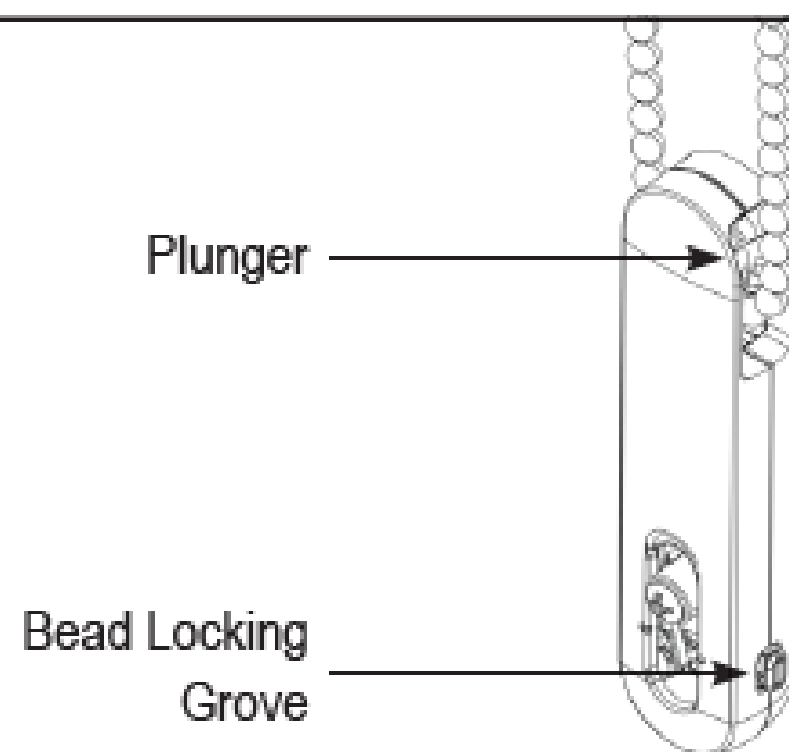


1. Place the idler pin end into the two vertical slots on the bracket. Keeping the idler pin end secure in its bracket, (2) insert the hooks on the spring head straight into the two slots in the other bracket. Once the two hooks are through the slots, gently pull downward until the hooks have locked securely to the bracket.

### 3. Install the End Caps (Open Roll Tubes 1 1/2" to 2 1/2")



### 4. Attaching the Beaded Cord Tensioner

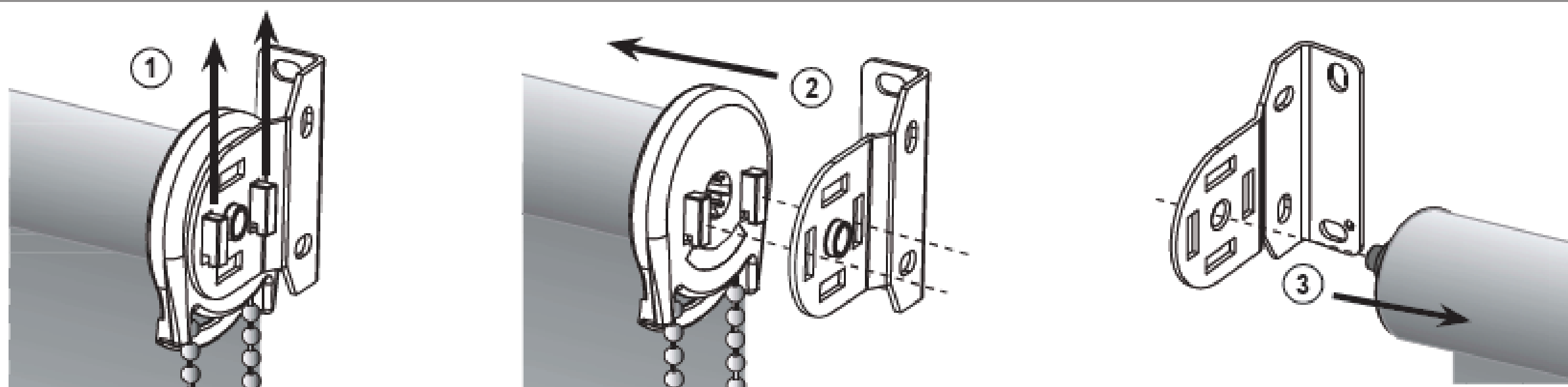


**NOTE:** For the shade to operate properly, the tensioner must be correctly mounted and secured.

[Click this link](#) to refer to the Installation Instructions for the Bead Chain Loop, Universal Cord Tensioner

3

### 5. Removing the Shade (Only if Necessary) – Tubes 1 1/2" to 2 1/2", Continuous Loop Control, Automation and TouchLift™



First, raise the shade. (1) To disengage, gently lift up the control side (hook end) until the hooks touch the top part of the bracket slot. Then, (2) slide the roll towards the idler pin end (Spring Idler end for TouchLift™ shades) until the hooks are completely out of the bracket slots. (3) Remove the spring loaded pin end from the Idler bracket.



## ADJUSTMENT TIPS

### Tension Adjustment for TouchLift™

**Inside Mount IB:** Follow instruction on Step 5 to remove the shade from the installation bracket before adjusting the tension.

**Outside Mount OB:** Do not need to remove the shade from the installation bracket, follow the steps below to adjust the tension

- 1) Use 5mm Allen wrench to turn the spring head (left side for standard roll and right side for reverse roll):
  - Turn clockwise to add/increase tension.
  - Turn counterclockwise to decrease/reduce tension.
- 2) After the additional turns for tension adjustment have been completed and with the Allen wrench still inserted inside the spring head, push the Allen wrench in to activate the inner break lock before removing the Allen wrench.
- 3) Reinstall the shade (and end cap if OB) after tension adjustment is complete.



### Upper Limit Adjustment for TouchLift™

**Inside Mount IB:** Follow instruction on Step 5 to remove the shade from the installation bracket.

**Outside Mount OB:** Do not need to remove the shade from the installation bracket, follow the steps below to adjust the upper limit.

- 1) Use 5mm Allen wrench to turn the idle end (right side for standard roll and left side for reverse roll):
  - Turn clockwise to lower the upper limit.
  - Turn counterclockwise to raise the upper limit.
- 2) Reinstall the shade (and end cap if OB) after adjustment is complete.

## Child Safety

Young children can **STRANGLE** in cord loops and in the loop above the cord stop. They can also wrap cords around their necks and **STRANGLE**.

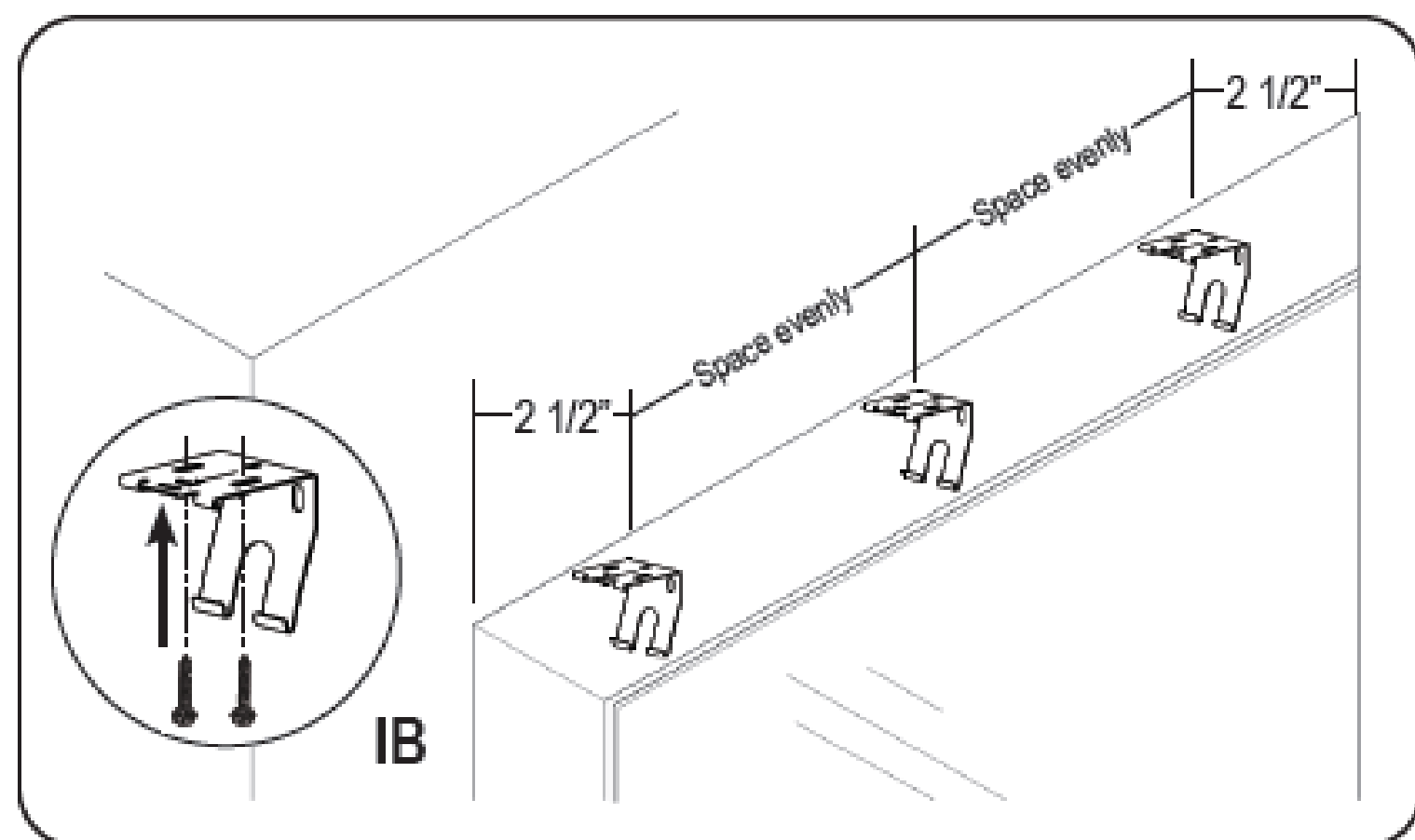
- Always keep cords out of children's reach.
- Move cribs, playpens and other furniture away from cords.  
Children can climb furniture to get to cords.
- Do not tie cords together.
- Make sure cords do not twist together and create a loop.



## 1. Install the Brackets

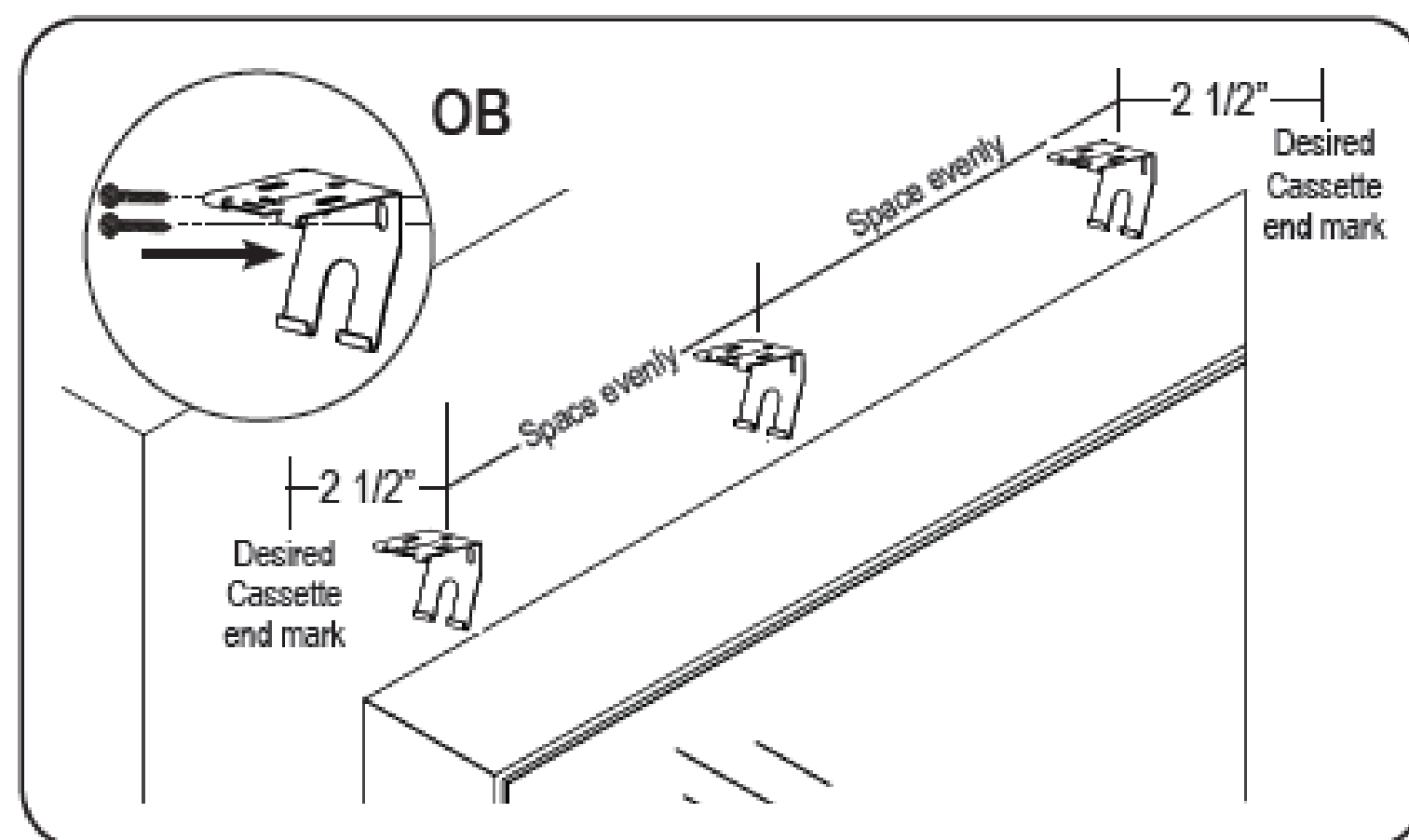
### Medium Cassette

**Important:** Make sure the mounting surface is level. Brackets must be in line and level for shade to operate properly.



#### Inside Mount IB:

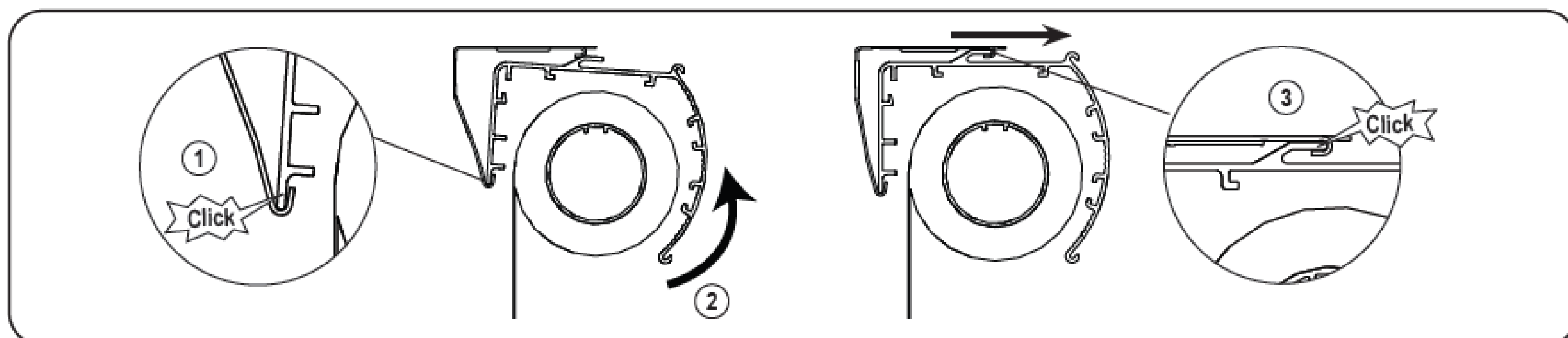
- Measure 2 1/2" inward from each side of the window frame.
- Using the screws provided, install the brackets leveled and aligned to each other.
- If applicable, evenly space out additional brackets between the brackets on both ends.
- See "IB" image above.



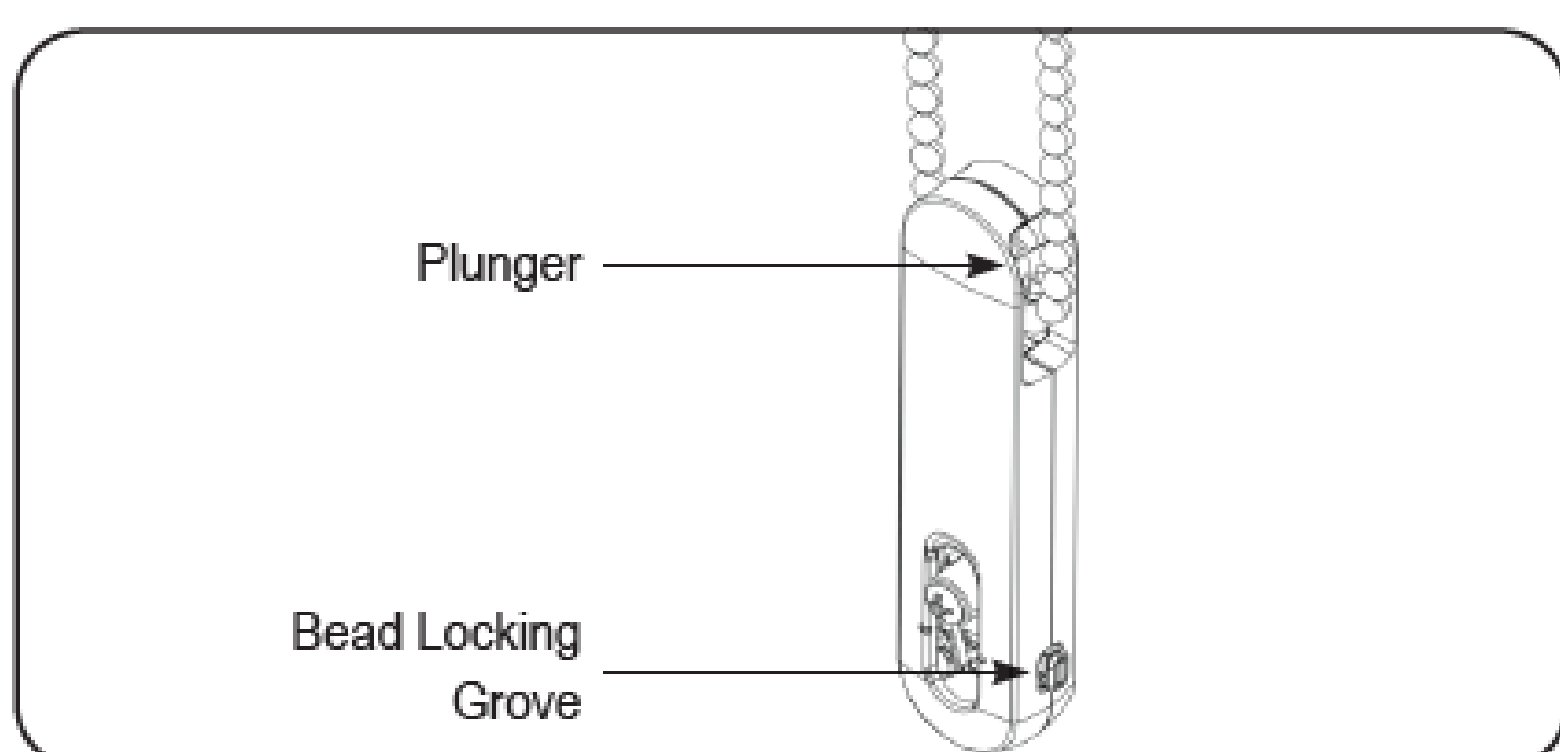
#### Outside Mount OB:

- Center the shade over the window opening at the desired height & width.
- Mark the location of the "Desired Cassette end mark" on both ends of the cassette.
- Measure 2 1/2" inward from the "Desired Cassette end marks" for the location of the brackets. If applicable, evenly space out the additional brackets between the brackets on both ends.
- Using the screws provided, install the brackets leveled and aligned to each other.
- See "OB" image above.

## 2. Install the Shade – Medium Cassette



## 3. Continuous Loop Control - Installation for Tensioner

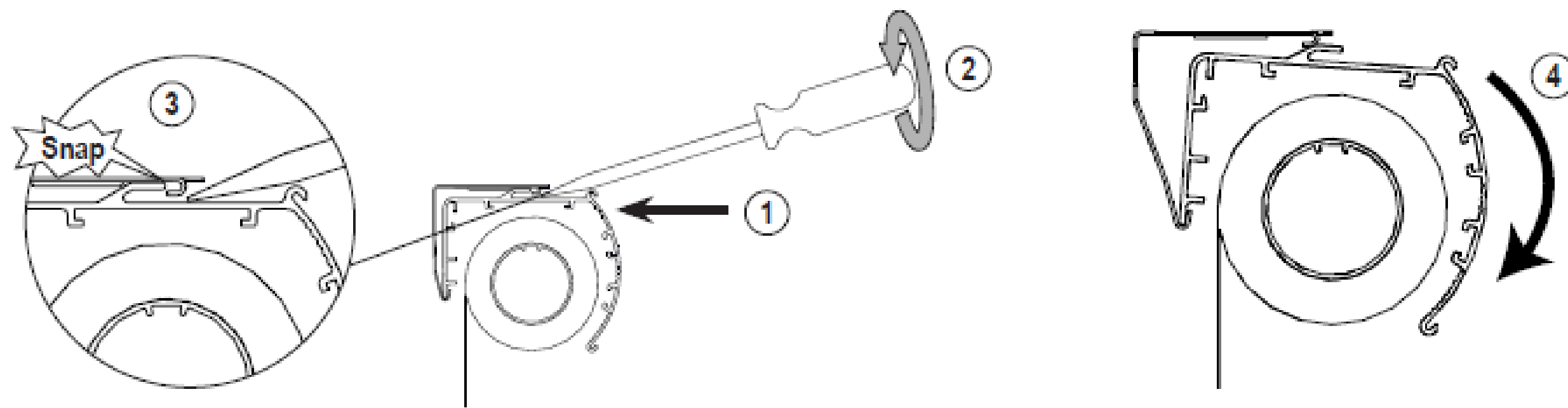


**NOTE:** For the shade to operate properly, the tensioner must be correctly mounted and secured.

[Click this link](#) to refer to the Installation Instructions for the Bead Chain Loop, Universal Cord Tensioner

## 4. Removing the Shade (Only if Necessary)

### Medium Cassette



### ADJUSTMENT TIPS

#### Tension Adjustments For TouchLift™

**Inside Mount IB:** Follow Step 4 to remove the shade from the installation bracket before adjusting the tension.

**Outside Mount OB:** Do not need to remove the shade from the installation bracket. Remove the end cap on the spring head side (left side for standard roll and right side for reverse roll).

- 1) Use hex key or 5mm Allen wrench to turn the spring
  - Turn clockwise to add/increase tension
  - Turn counterclockwise to decrease/reduce tension.
- 2) After the additional turns for tension adjustment have been completed and with the Allen wrench still inserted inside the spring head, push the Allen wrench in to activate the inner break lock before removing the Allen wrench.
- 3) Reinstall the shade (and end cap if OB) after tension adjustment is complete.



#### Upper Limit Adjustments For TouchLift™

**Inside Mount IB:** Follow instruction on Step 4 to remove the shade from the installation bracket.

**Outside Mount OB:** Do not need to remove the shade from the installation bracket, follow below steps to adjust the upper limit.

- 1) Use hex key or 5mm Allen wrench to turn the spring
  - Turn clockwise to lower the upper limit.
  - Turn counterclockwise to raise the upper limit.
- 2) Reinstall the shade (and end cap if OB) after adjustment is complete.

### Child Safety

Young children can **STRANGLE** in cord loops and in the loop above the cord stop. They can also wrap cords around their necks and **STRANGLE**.

- Always keep cords out of children's reach.
- Move cribs, playpens and other furniture away from cords.  
Children can climb furniture to get to cords.
- Do not tie cords together.
- Make sure cords do not twist together and create a loop.

**⚠ WARNING**  
**⚠ ADVERTENCIA**

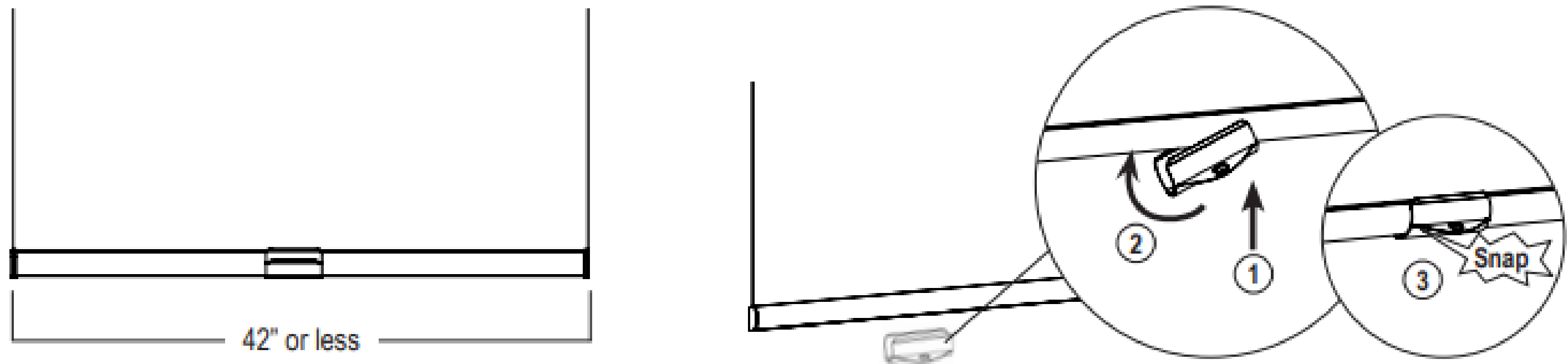
**Window Blind Cord Strangulation Risk**  
Window Blinds with a damaged or loose tension device or retractable cord that fails to fully retract pose a strangulation risk to children. To avoid this potential strangulation risk, consider purchasing cordless products or products with inaccessible cords.

**Riesgo de Estrangulamiento en Cuerdas de Persianas**  
Las persianas con un dispositivo tensor suelto o dañado o con una cuerda retractable que no se ajusta completamente representan un riesgo de estrangulación para los niños. Para evitar un posible riesgo de estrangulamiento, considere comprar productos inalámbricos o productos con cuerdas inaccessibles.



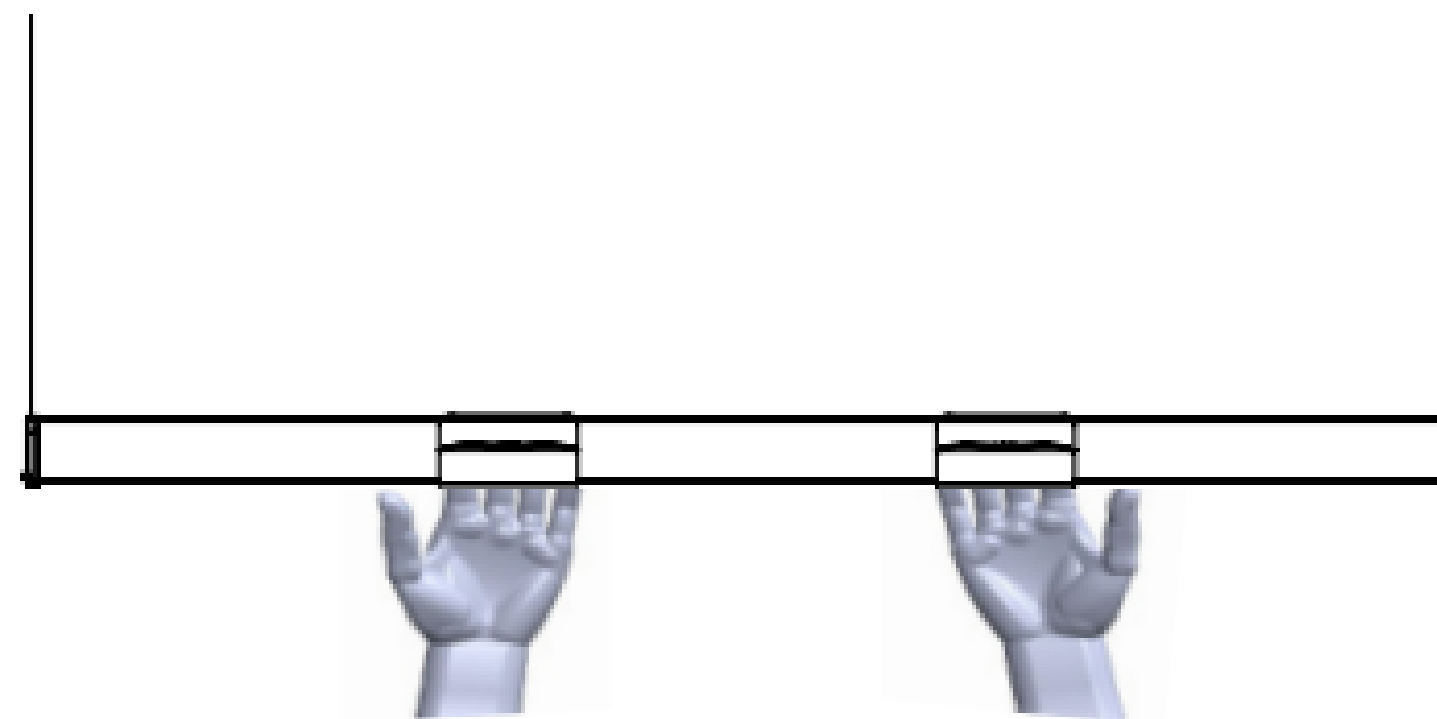
**IMPORTANT:** All drawings shown are for installation illustration purpose only. Actual product may vary.

## Install the Cordless Handle



**IMPORTANT:** The handle should be attached to the center of the bottomrail if the shade is 42" in width or less.  
First, insert one end of the handle, then rotate and push the handle upward against the bottomrail until it snaps in place.

## Shades Larger Than 42"



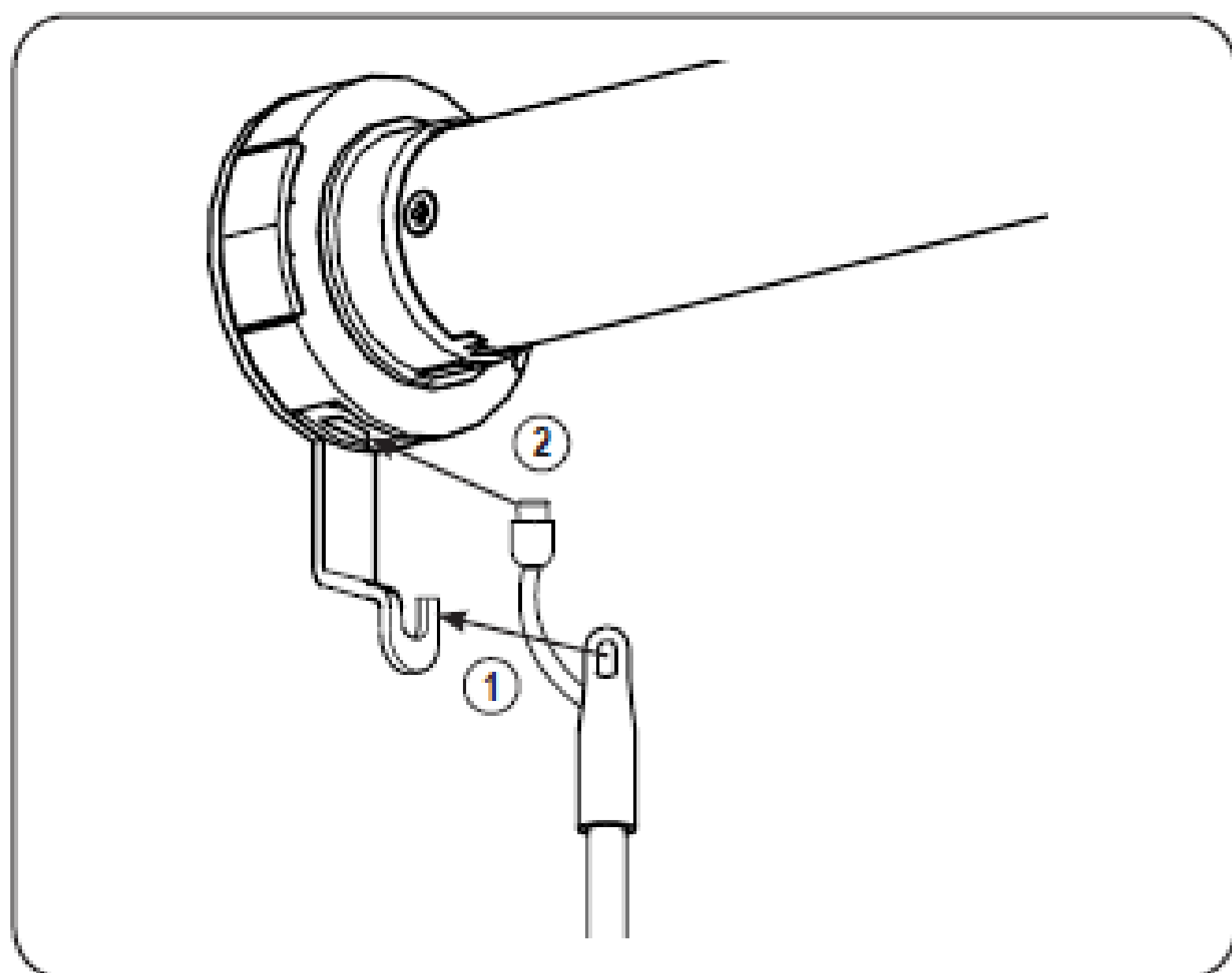
If the shade width is greater than 42", it will require two handles. They should be spaced evenly across the bottomrail to grip with two hands.

## QUICK PROGRAMMING GUIDE

## POWERWAND™

Honeycomb Shades | Banded Shades | Roller Shades  
Sheer Shadings | Natural Woven Shades

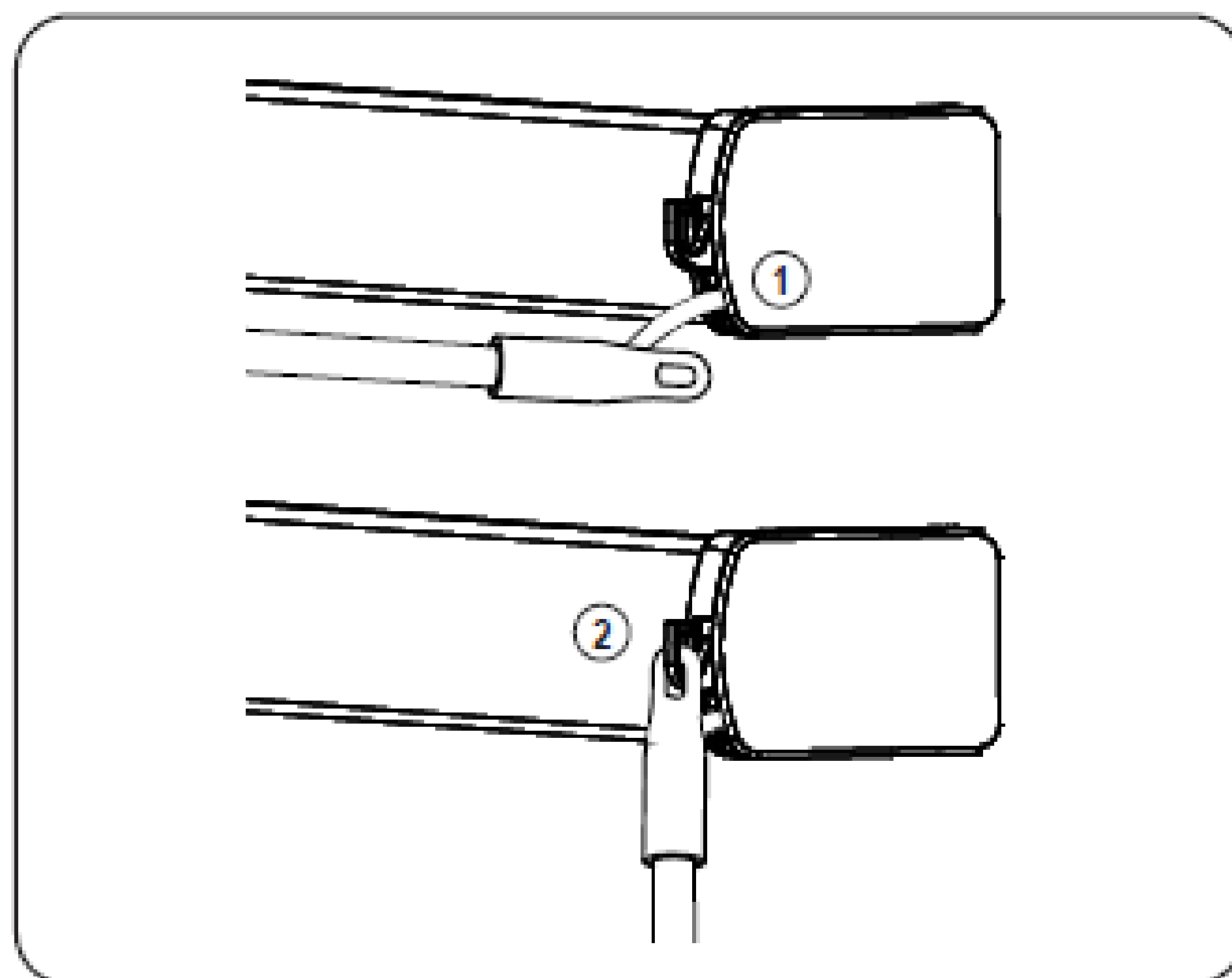
### 1a. Attach the Wand — Sheer Shadings, Banded & Roller Shades



On Banded Shades, Roller Shades and Sheer Shadings, with the wand control buttons facing you, attach the top of the wand on the metal hook support (1) on the motor control side, then connect the cable into the motor head (2).

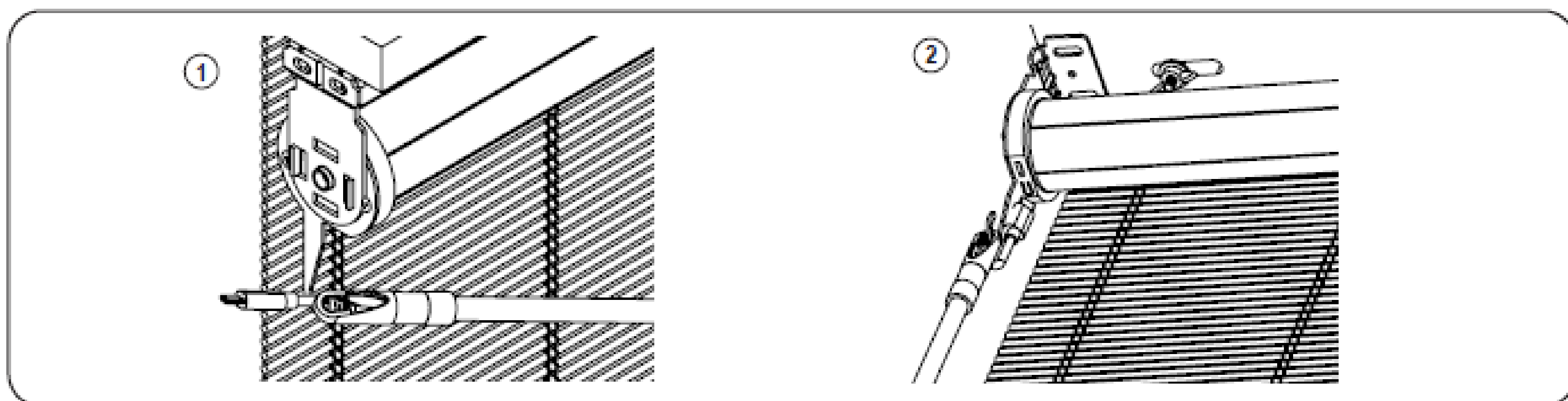
**Note:** On Sheer Shadings ordered with Powerwand on the right side, the cable may be wrapped around the hook. This is normal. You may unwrap, if you desire, as this does not affect functionality. You still need to connect the cable into the motor head.

### 1b. Attach the Wand — Honeycomb Shades



On Honeycomb shades, the wand will be already connected to the shade (1). With the wand control buttons facing you, attach the top of the wand into the plastic hook support on the motor control side (2).

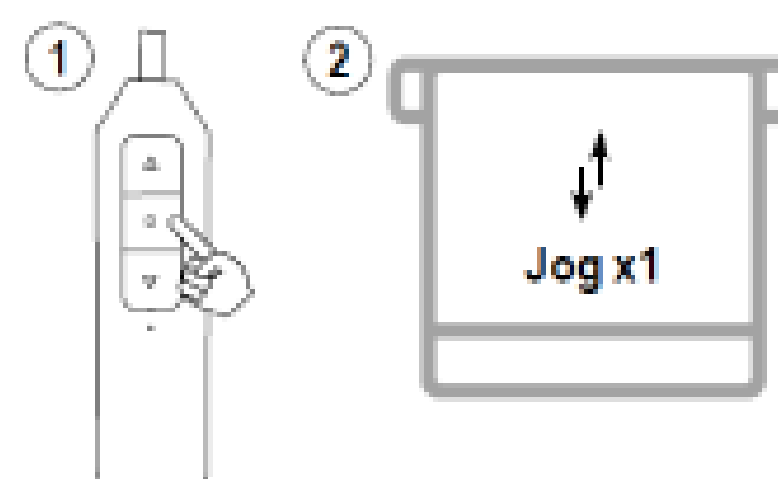
### 1c. Attach the Wand — Natural Woven Shades



On Natural Woven Shades, with the wand control buttons facing you (1) approach the hook with the wand parallel to the headrail. (2) Gently twist the wand to attach it to the hook. Connect the cable into the motor.

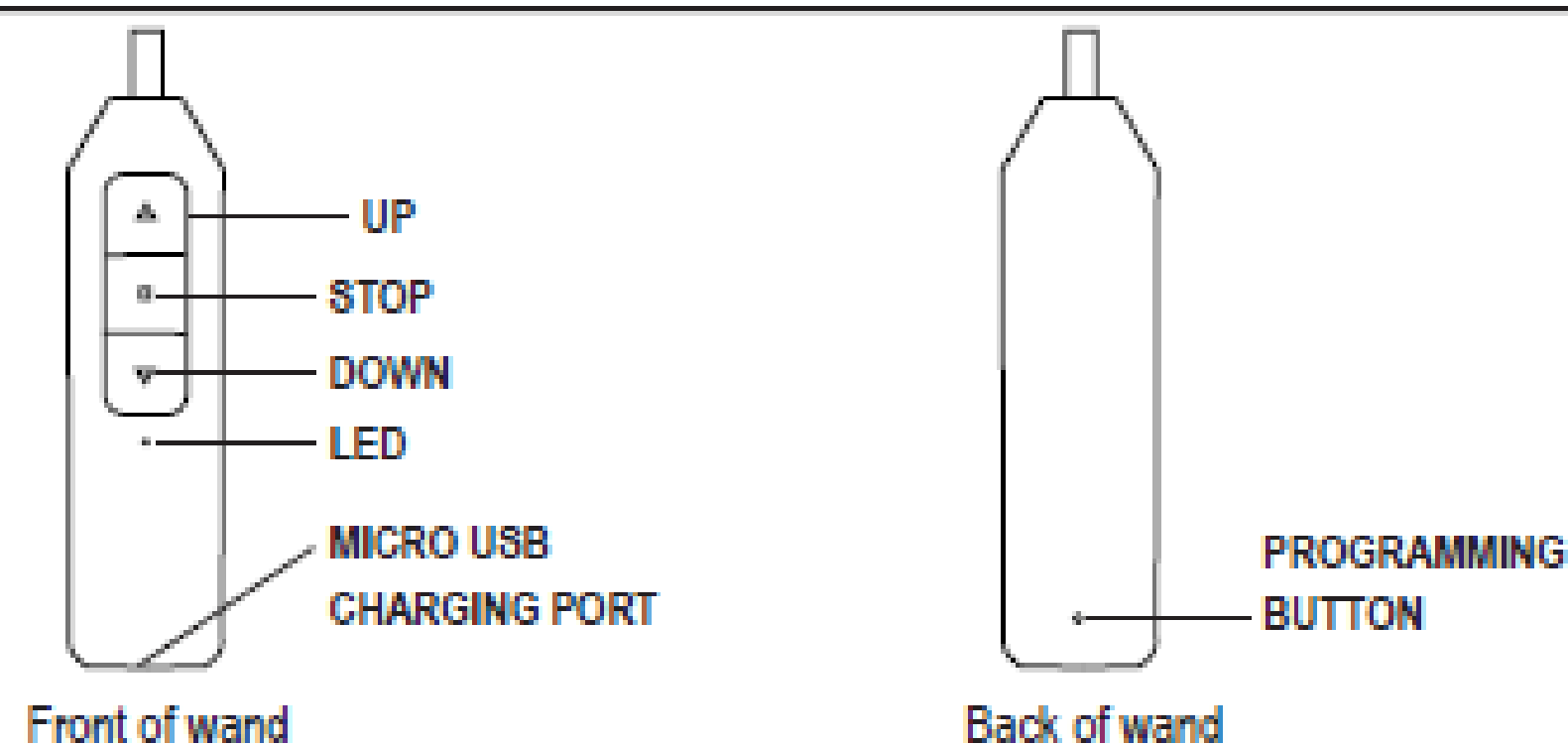
**Important:** Before starting the programming, install the shade following the installation instructions provided.  
Honeycomb shades are shipped with the motor in sleep mode to avoid activation during transit.

**For Honeycomb Shades,** To wake up the motor prior to operating the shade: Press the STOP button 5 times (1) - the first 4 times press quickly and the 5th time PRESS and HOLD the stop button until the motor jog (2).





## 2. Operate the Wand



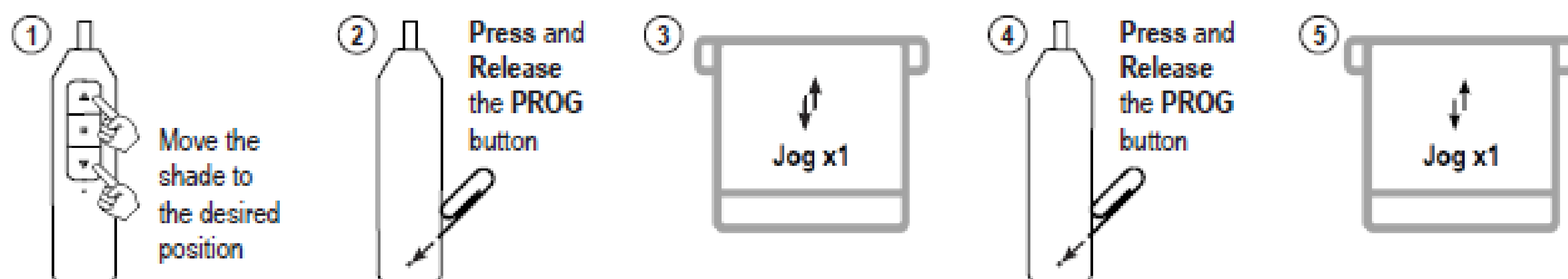
### Roller and Honeycomb Mode:

- Press the **DOWN** or **UP** button to lower or raise the shade. Press the **STOP** to stop the shade at the desired position.

### Sheer Shadings and Banded Shades Mode:

- Tapping the **UP** or **DOWN** button for less than 2 seconds will move the shade in short steps.
- Holding the **UP** or **DOWN** button down for more than 2 seconds before releasing will operate the shade at the standard speed.
- Press the **STOP** button to stop the shade at the desired position.

## 3. Set a Favorite Position



**IMPORTANT:** Once the favorite position is set, the shade will always stop at the designed favorite position when passing by it.  
Click 2 x Up or Down button, the shade will go to set Top or Bottom Limit.

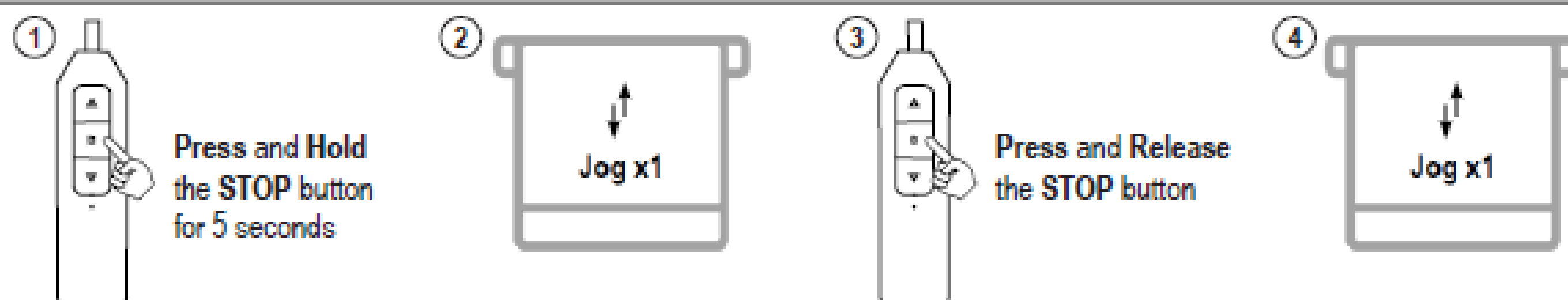
## 4. Remove a Favorite Position



## 5. Advanced Programming

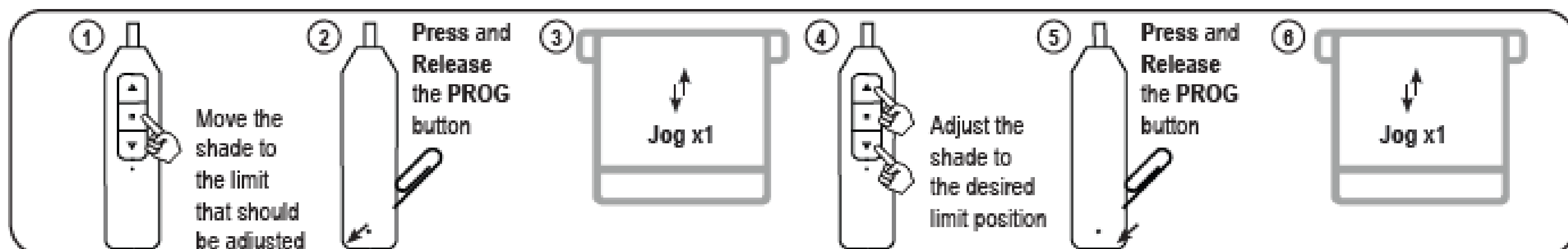
**IMPORTANT:** Damage to shade may occur when operating the motor prior to setting limits. Attention should be given.

### Switch between Roller and Sheer Shadings Mode

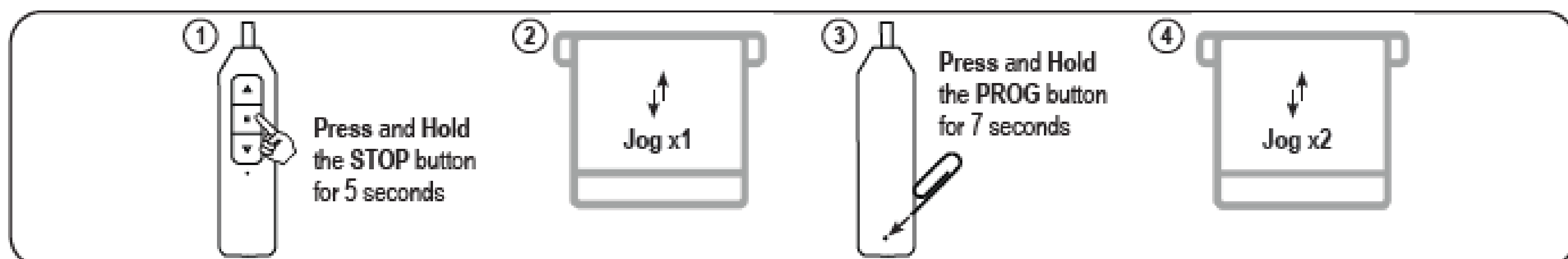


## QUICK PROGRAMMING GUIDE

### Adjust the Top and/or Bottom Limit

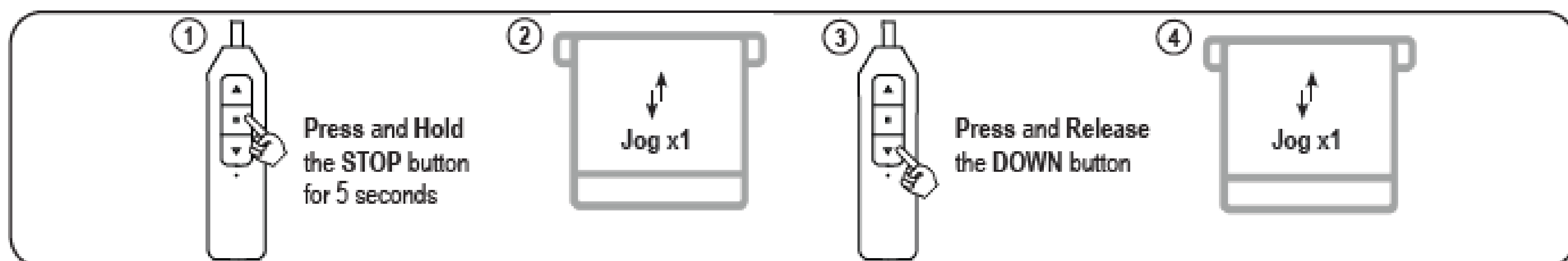


### Factory Motor Reset

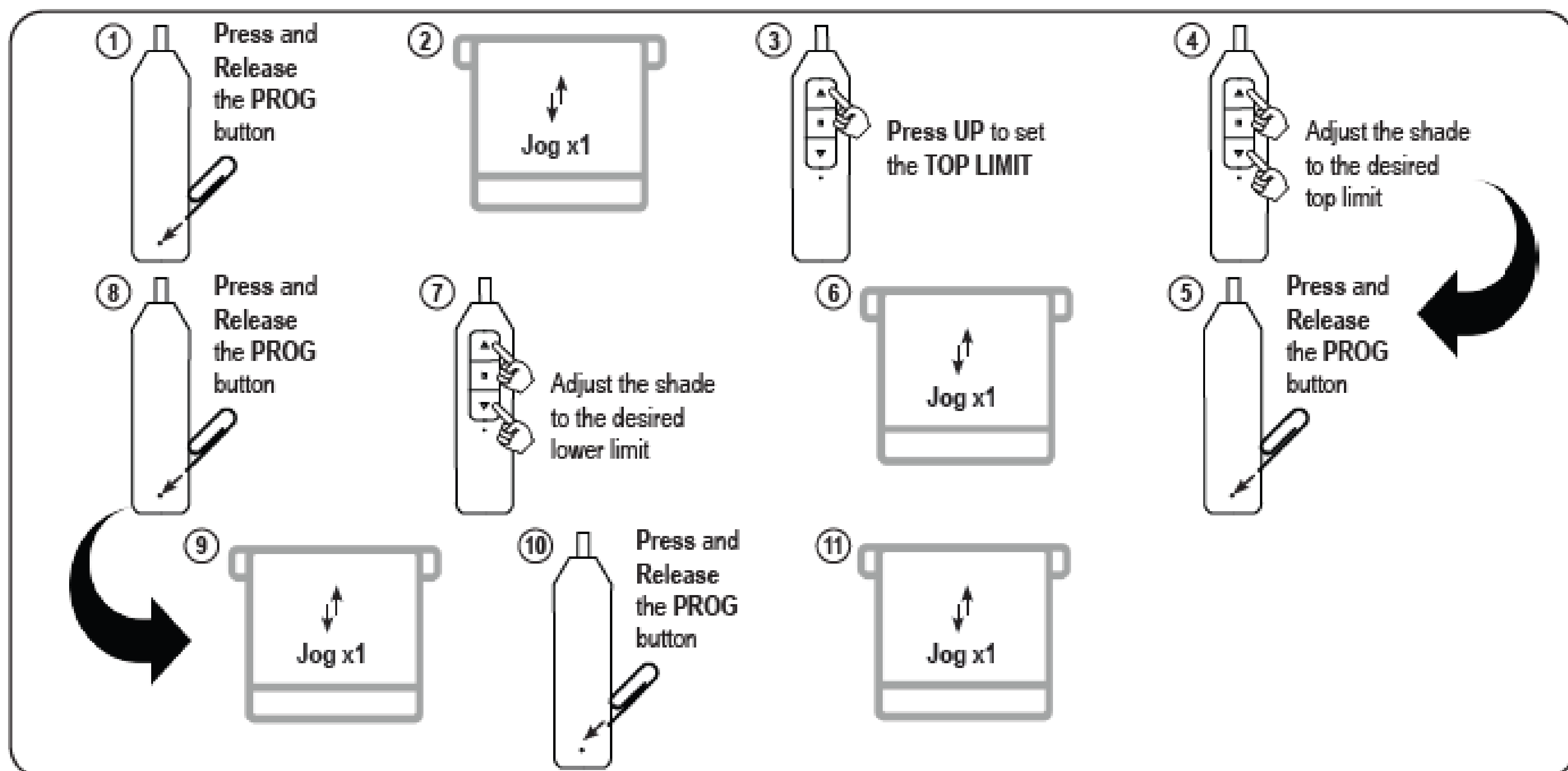


**IMPORTANT:** All limits will be erased. The motor direction will return to default and may need to be adjusted.

### Reverse UP and DOWN Commands (Only if necessary)

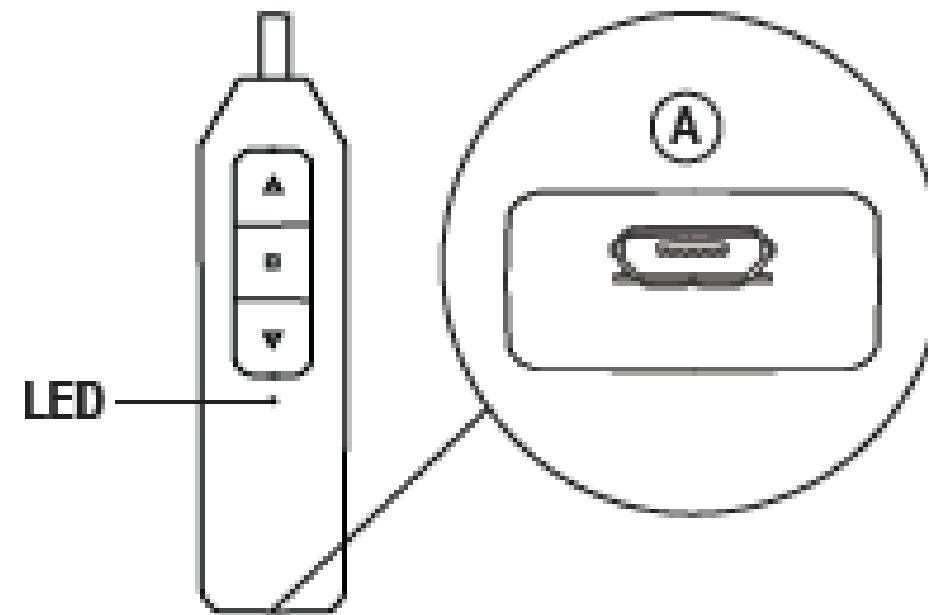


### Set Upper and Lower Limits ( Only after Factory Motor Reset)



## QUICK PROGRAMMING GUIDE

### 6. Charge the Battery



When the shade begins to operate slower than normal or only beeps when you attempt to operate, it is time to charge the battery.

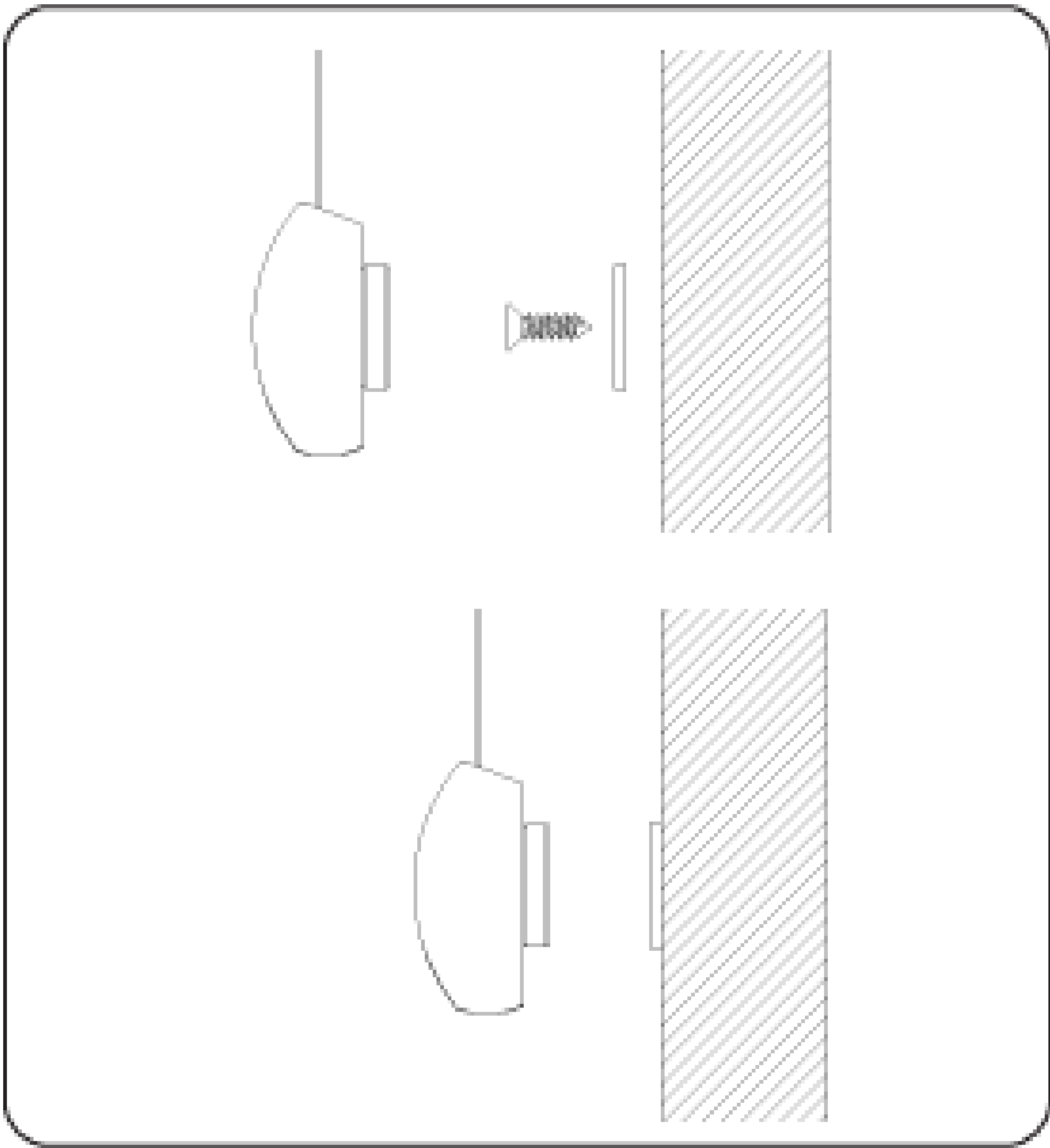
To Charge, connect a standard micro USB cable into the bottom of the wand (A) and into USB 5V/2A (max) power supply. A red LED on the wand indicates that the battery is charging. To fully charge the batteries, allow the batteries to charge for at least 1 hour after the LED on the wand turns green.

*Note: A typical charge cycle can take between 4-6 hours.*

## Troubleshooting

Issues	Possible Causes	Solution
The shade is not responding	Built in battery is depleted	Recharge with compatible USB 5V/2A (max) adapter and a micro USB cable. Details under "6. Charge the Battery"
	Wand is not fully connected to the motor	Check the connection between the wand and the motor
The shade moves the opposite direction on the control buttons	The motor direction is reversed	See details under "Reverse Up and Down Commands"
The shade stops by itself before it reaches the top or bottom limit	A favorite position was set	See details under "4. Remove a Favorite Position"
The shade only moves in small steps after pressing the button	The shade is operating on Sheer Shadings/ Banded Shades mode	Switch to Roller/Honeycomb mode by following the steps under "Switch between Roller and Sheer Shadings Mode"
	The shade has no limit set	See details under "Set Upper and Lower Limits"

# Installing the Magnetic Hold-Down



**Important:** The magnets will be pre-installed onto the bottom rail. The round catch plate will be provided.

Lower the shade to align the magnet with the location for the catch. Once location has been identified, mark the position of the catch onto the wall by pressing the screw into the wall. Raise the shade and install the catch plate to the marking made and with the screw provided.

When shades are fully lowered and the bottom rail is attached to either hold down brackets, detach the bottom rail from the brackets/catches before raising the shade.

## Child Safety



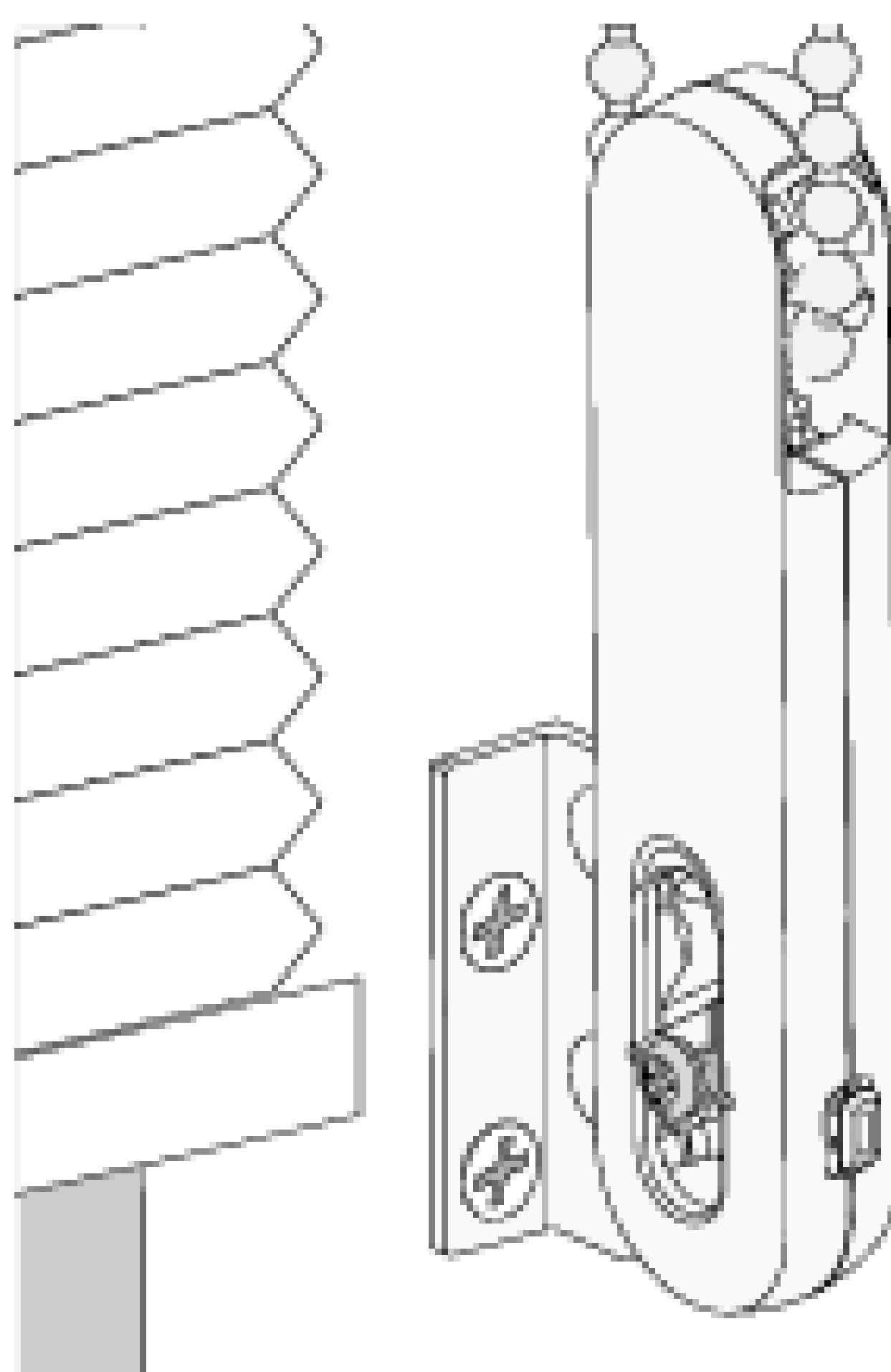
### WARNING

STRANGULATION HAZARD –  
Young children can be strangled by cords.

Immediately remove this product if a cord longer than 22 cm or a loop exceeding 44 cm around becomes accessible.

Rev 3/21    Print 7/21

# Installation Instructions



## **Bead Chain Loop Universal Cord Tensioner**

Inside Mount or  
Outside Mount Installations



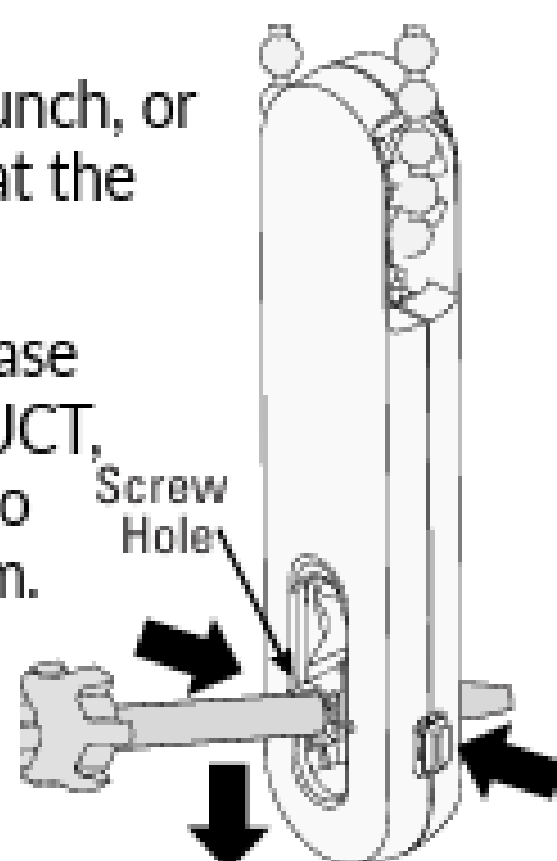
## Getting Started

Before doing anything, you must first slide the Universal Cord Tensioner (UCT) to the bottom of the bead chain loop.

1. Insert a small screwdriver, punch, or awl through the screw hole at the bottom of the UCT.
2. While pressing the UCT release buttons on the sides of the UCT, move the screw hole down to release the safety mechanism.
3. Slide the UCT down to the bottom of the bead chain loop.
4. Install the window covering.
5. Use the following instructions to secure the UCT.

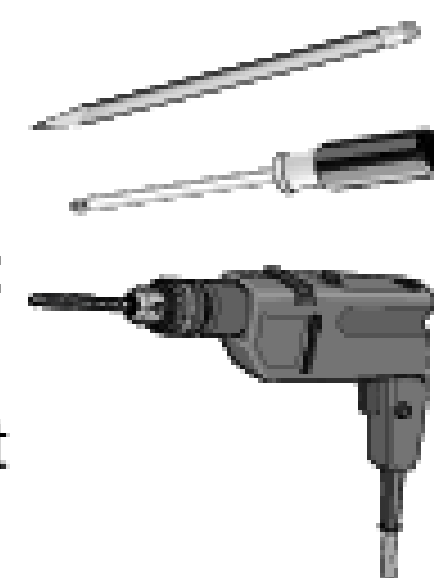
**WARNING:** A damaged, loose, or missing tension device poses a strangulation risk to children. Remove from use and repair or replace if tension device is damaged, loose, or missing.

**CAUTION:** The window covering will not operate properly unless the UCT is secured.



## Required Tools

- Pencil
- Small-tip Phillips screwdriver
- Power drill with two drill bit sizes:
  - For applications not requiring wall anchors, use a  $\frac{1}{8}$ " drill bit and drill  $1\frac{1}{4}$ " deep.
  - For applications requiring anchors, use a  $\frac{7}{32}$ " drill bit.



**CAUTION:** Use wall anchors if the mounting screws will not be secured into wood or metal. For metal surfaces, sheet metal screws are recommended.

### IMPORTANT

Install the UCT in a location that minimizes access by children and pets. Locate the UCT where it will not interfere with window covering operation.

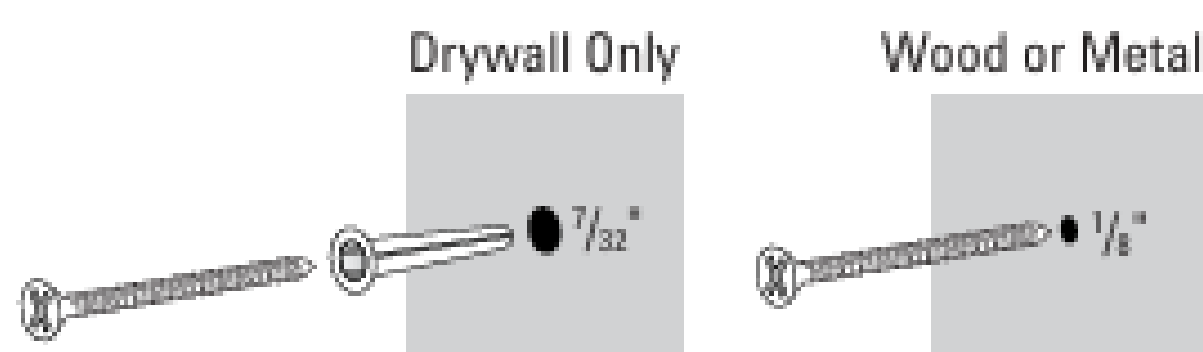
Only the supplied UCTs and UCT hardware should be used.

## Wall Anchors

If only drywall is available for mounting, a wall anchor is required to ensure a secure attachment of the UCT. If the screw or screws can be fastened into wood or metal (even if the wood is behind drywall), a wall anchor is not necessary.

1. If no wood or metal is available to hold the screw, mark the hole position as shown in the procedures below.
2. Drill a  $\frac{7}{32}$ " pilot hole through the drywall for each wall anchor at the locations you marked.
3. Tap each wall anchor into its pilot hole until the flange of the anchor is flush with the drywall.
4. Align the UCT or bracket holes to the anchors.
5. Attach the tensioner or bracket using the provided  $1\frac{1}{2}$ " screws.

**NOTE:** When mounting into wood or metal, drill  $\frac{1}{8}$ " pilot holes.



## Choose a Mounting Option

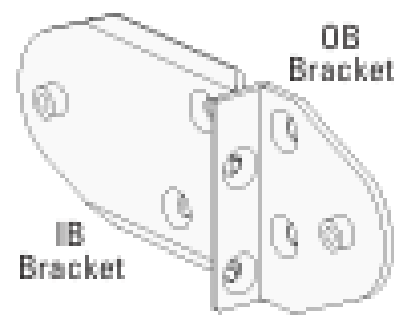
The Universal Cord Tensioner (UCT) can be mounted in one of three ways:

- For outside mount (OB) products:
    - "Outside Mount" on page 6. This attaches the UCT to a bracket secured to the wall outside the window casement.
  - For inside mount (IB) products, you have two choices:
    - "Inside Mount with a Bracket" on page 10. This attaches the UCT to a bracket secured to the inside of the window casement.
    - "Inside Mount without a Bracket" on page 13. This attaches the UCT directly to the inside of the window casement.
- NOTE:** If mounting to a textured or uneven surface, use the provided mounting bracket.

**IMPORTANT:** For all mounting options, locate the UCT as close to the window glass as possible to minimize accessibility by children and pets. Be sure the UCT is not placed in the path of the bottom rail or fabric.

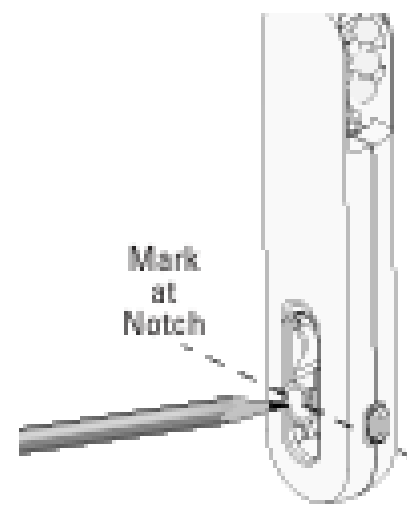
## Outside Mount

1. Break off the Outside Mount (OB) bracket.

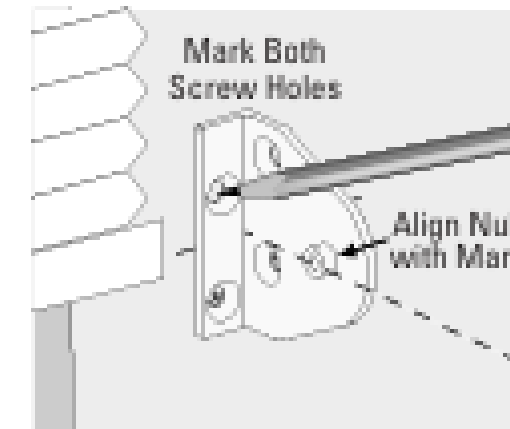


2. With the Universal Cord Tensioner (UCT) at the bottom of the bead chain loop, position it at the desired location.

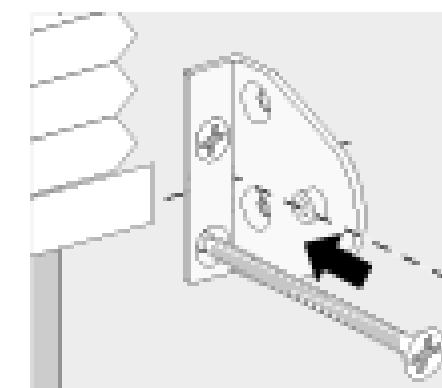
3. Mark the wall at the notch in the UCT.



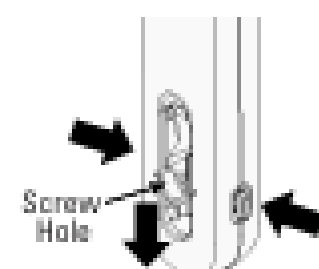
4. Hold the OB bracket with its center hole aligned with the mark and mark both screw hole locations.



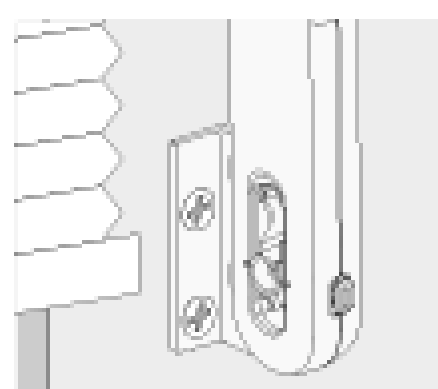
5. Drill the screw holes.
  - Determine whether or not wall anchors are required (see "Wall Anchors" on page 4) and drill either  $\frac{1}{8}$ " pilot holes (no wall anchor) or  $\frac{7}{32}$ " pilot holes (with wall anchor).
6. Mount the UCT bracket.
  - a. If wall anchors are required, first tap them into the pre-drilled holes.
  - b. Use a Phillips screwdriver and the longer screws provided to attach the bracket to the wall.



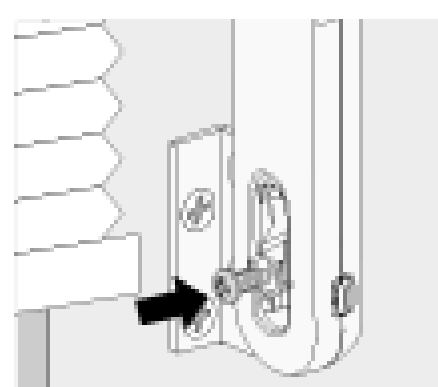
7. Attach the UCT to the bracket
  - a. Press the UCT release buttons on the sides of the UCT while pulling down on the spring-loaded screw hole.



- b. Insert the nub on the inside mount bracket into the back of the screw hole in the UCT.



- c. Insert the small provided screw into the nub through the front of the screw hole and tighten it to secure the UCT to the bracket.

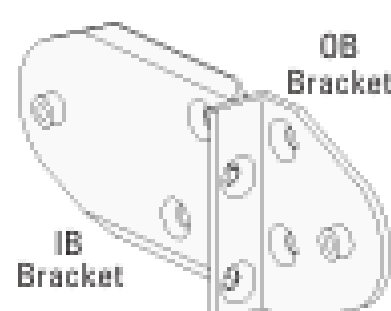


8. Ensure the bead chain can move freely through the UCT without engaging the lock. The center of the screw hole should be aligned with the notch in the UCT ( $\pm \frac{1}{8}$ ").
  - If the bead chain does not move freely through the UCT, the bead chain is too tight and the UCT should be moved up.
  - If the UCT locks onto the bead chain, the bead chain is too loose and the UCT should be moved down.

**CAUTION:** Do not pull the screw hole down to the bottom of the slot. This may cause the bead chain to become too tight, affecting window covering function and increasing bead chain wear.

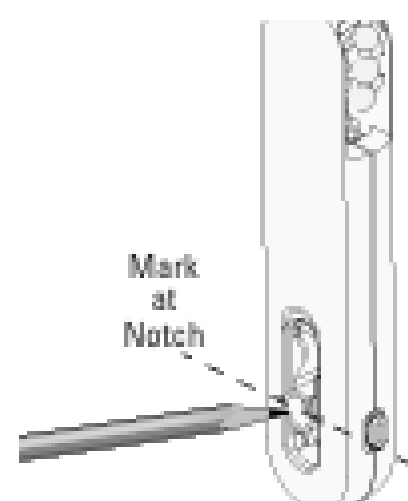
## Inside Mount with a Bracket

1. Break off the Inside Mount (IB) bracket

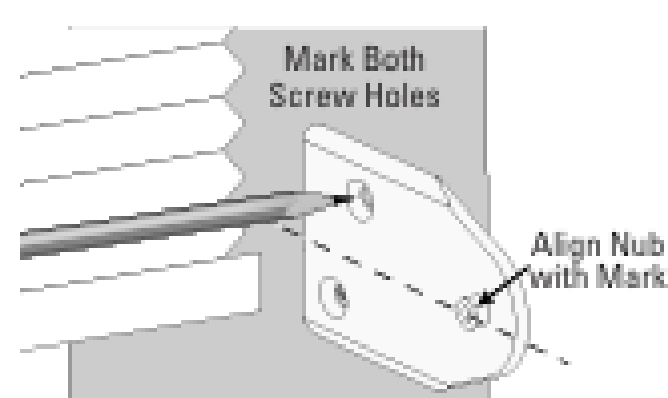


2. With the Universal Cord Tensioner (UCT) at the bottom of the bead chain loop, position it at the desired location.

3. Mark the window casement at the notch in the UCT.



4. Hold the IB bracket with its center hole aligned with the mark and mark both hole locations.

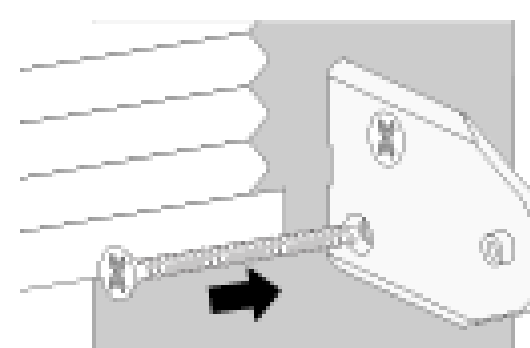


5. Drill the screw holes.

- Determine whether or not wall anchors are required (see "Wall Anchors" on page 4) and drill either a  $\frac{1}{8}$ " pilot hole (no wall anchor) or a  $\frac{7}{32}$ " pilot hole (with wall anchor).

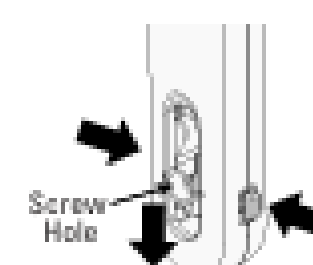
6. Mount the UCT bracket.

- a. If wall anchors are required, first tap them into the pre-drilled holes.
- b. Use a Phillips screwdriver and the longer provided screws to attach the bracket to the wall.

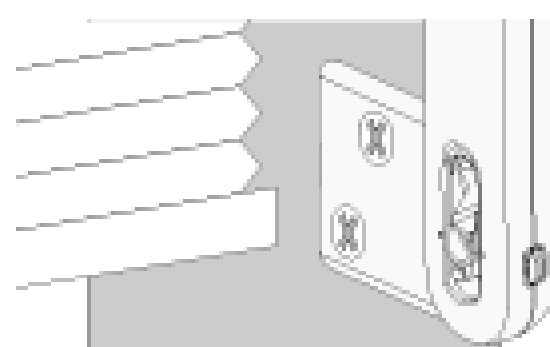


7. Attach the UCT to the bracket

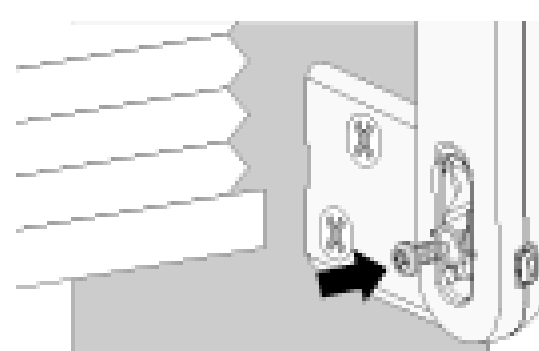
- a. Press the UCT release buttons on the sides of the UCT while pulling down on the spring-loaded screw hole.



- b. Insert the nub on the inside mount bracket into the back of the screw hole in the UCT.



- c. Insert the small provided screw into the nub through the front of the screw hole and tighten it to secure the UCT to the bracket.



8. Ensure the bead chain can move freely through the UCT without engaging the lock. The center of the screw hole should be aligned with the notch in the UCT ( $\pm \frac{1}{8}$ ").

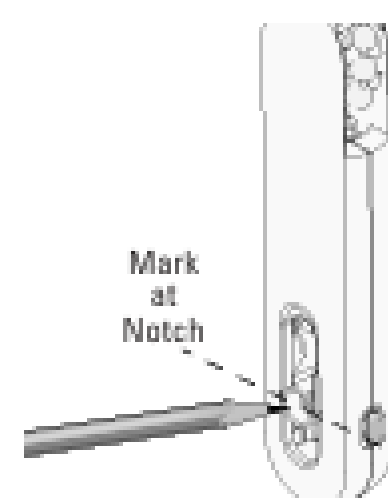
- If the bead chain does not move freely through the UCT, the bead chain is too tight and the UCT should be moved up.
- If the UCT locks onto the bead chain, the bead chain is too loose and the UCT should be moved down.

**CAUTION:** Do not pull the screw hole down to the bottom of the slot. This may cause the bead chain to become too tight, affecting window covering function and increasing bead chain wear.

## Inside Mount without a Bracket

**NOTE:** If mounting to a textured or uneven surface, use the provided mounting bracket.

1. With the Universal Cord Tensioner (UCT) at the bottom of the bead chain loop, position it at the desired location.
2. Mark the window casement at the notch in the UCT.

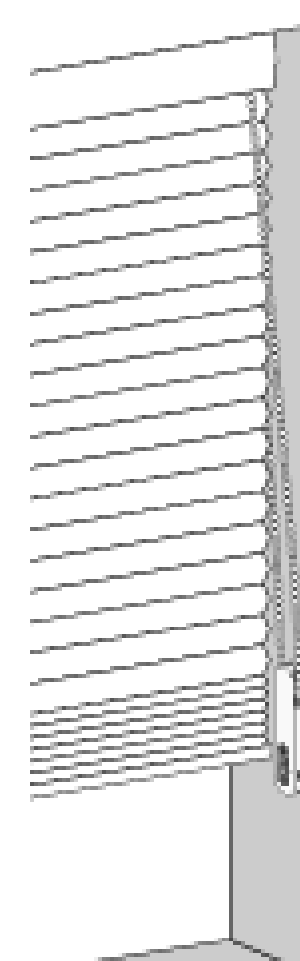


3. Mark and drill the screw hole.

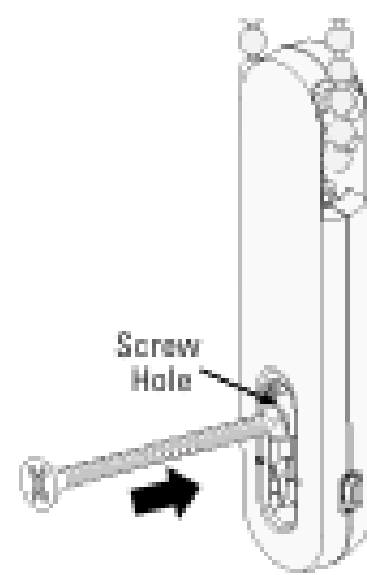
- Determine whether or not a wall anchor is required (see "Wall Anchors" on page 4) and drill either a  $\frac{1}{8}$ " pilot hole (no wall anchor) or a  $\frac{7}{32}$ " pilot hole (with wall anchor).

4. Mount the UCT

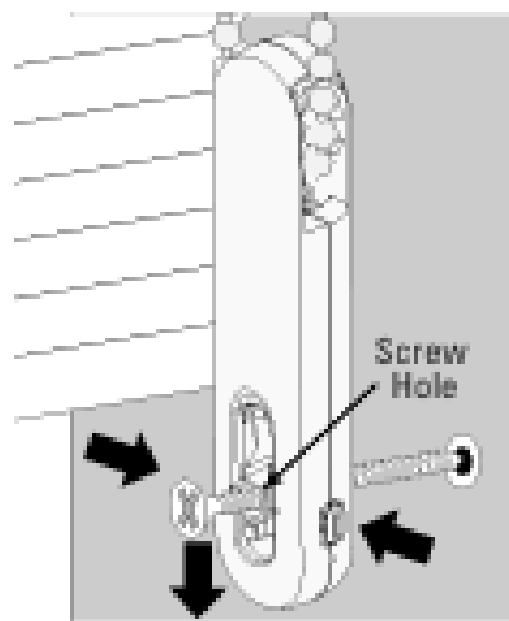
- a. If a wall anchor is required, first tap the anchor into the pre-drilled hole.



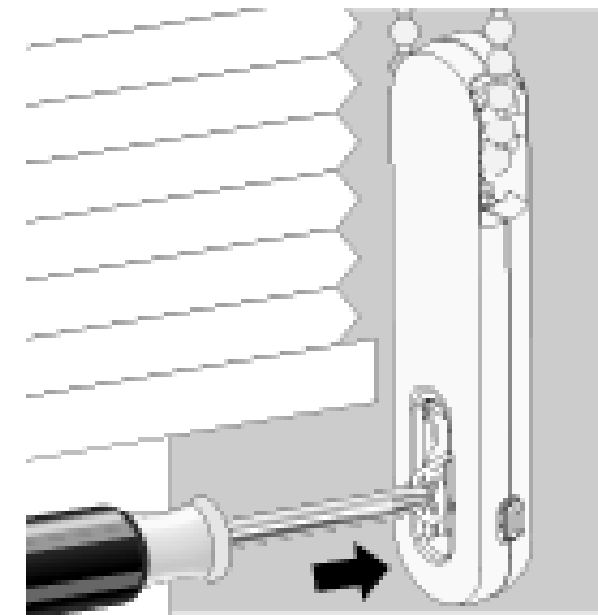
b. Insert one of the longer provided screws into the screw hole in the UCT.



c. Press in on the UCT release buttons and pull down on the screw hole to align the hole with the wall anchor or pilot hole.



d. Attach the UCT directly to the wall.



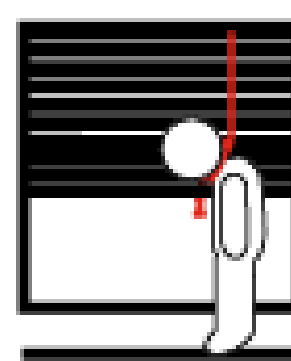
**CAUTION:** Do not overtighten the mounting screw. This can prevent the UCT from functioning properly and increase bead chain wear.

5. Ensure the bead chain can move freely through the UCT without engaging the lock. The center of the screw hole should be aligned with the notch in the UCT ( $\pm 1/8"$ ).

- If the bead chain does not move freely through the UCT, the bead chain is too tight and the UCT should be moved up.
- If the UCT locks onto the bead chain, the bead chain is too loose and the UCT should be moved down.

**CAUTION:** Do not pull the screw hole down to the bottom of the slot. This may cause the bead chain to become too tight, affecting window covering function and increasing bead chain wear.

## **WARNING**



### **Products with a Damaged, Loose, or Missing Tension Device Pose a Strangulation Risk to Children.**

This Window Blind is equipped with a Tension Device

- Remove from use and repair or replace if tension device is damaged, loose, or missing
- Tension device must be securely attached to wall or floor
- Children can climb on furniture to reach cords
  - Fasteners provided with tension device may not be appropriate for all mounting surfaces
  - Use appropriate anchors for mounting surface conditions
- Tag to be removed only by end-user