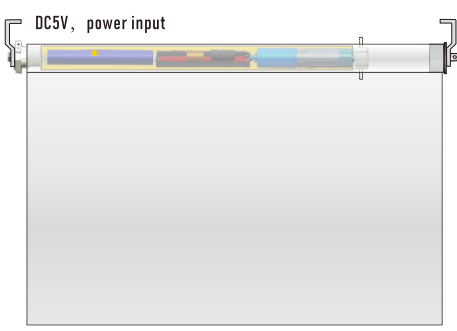


MOTOR PROGRAM INSTRUCTION



MOTOR FEATURES

- Energy saving design, powered by large capacity Li-ion battery;
- Motor can be control by RF remote and APP control via Bluetooth communication protocol
- Easy operation intelligent motor; Motor program settings can be do either by remote or by smart phone APP
- Patented smooth and quiet design; soft start and soft stop; running noise level lower to 35dB
- Low battery warning mode remind customer to charge motor in time
- motor can set 6 limits, include top/bottom limits and 4 favorite intermediate limits
- various user friendly features on APP control via Bluetooth



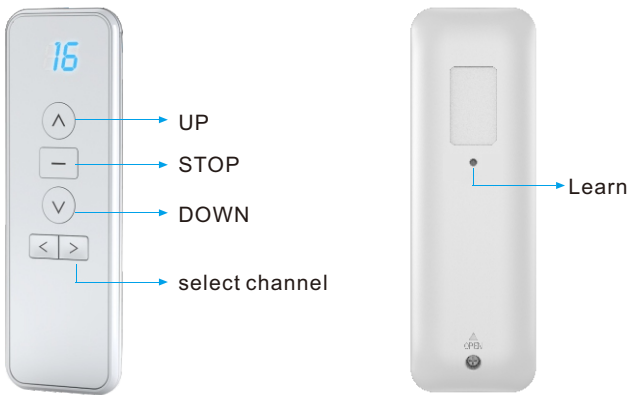
POWER SOURCE & CHARGING

- Built-in Li-ion battery supply. Recharged using an external charging kit include a charger block and one USB-C charging cable.
- Motor one full charge ca be used for 4-6 months vary with shade use frequency.
- Charging time is 6-8 hours;

Tips:
1. For longer life service of the motorized shade, we suggest all li-ion battery motor need to charge battery every 6 months to avoid battery over discharge
2. Please charge the motor for around 6 hours until you see the green light before first use



remote illustration



Operation Instruction

1. Power ON/OFF

* After switching off power, the motor will not be able to receive remote signals.

Power ON



Press the PROG button on motor head for 1", motor flash red one time

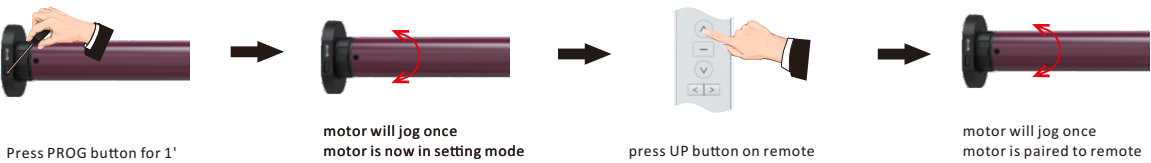
Power OFF



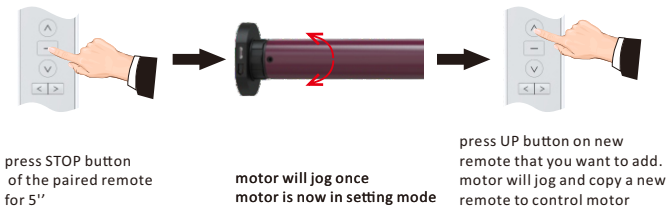
Press the PROG button on motor head for 7", motor flash red 3 times

2. Pairing remote

* If there is no action in 10 seconds, the motor will exit programming automatically.



3. Copy new remote

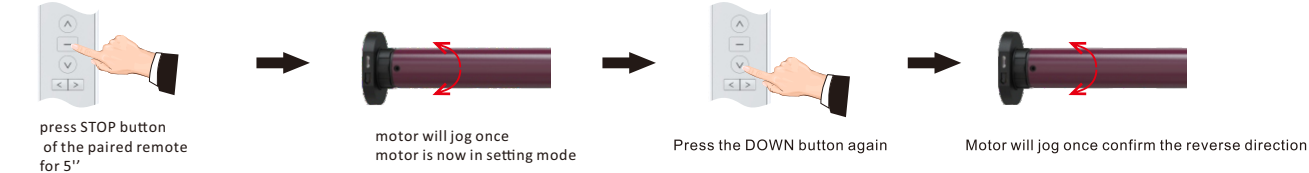


4. Change running mode (two modes)

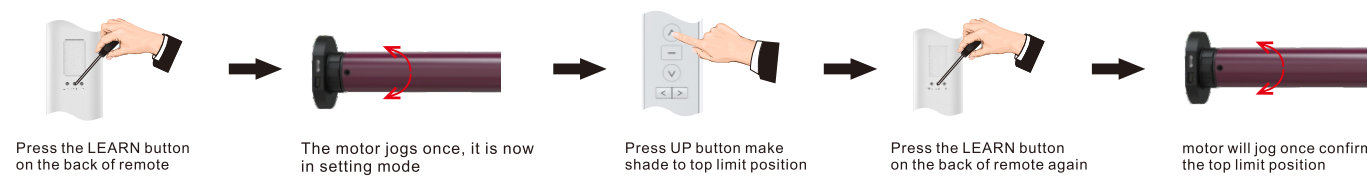
(Continuously mode: when you hit the up/down button, motor will immediately run to next limit)
(Jogging move mode: when you hit the up/down button less than 1", motor only jog, keep press for more than 1", motor will keep running)



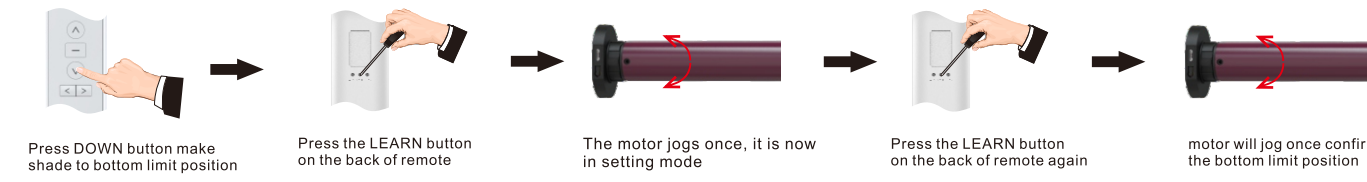
5. Change direction



6. TOP limit setting



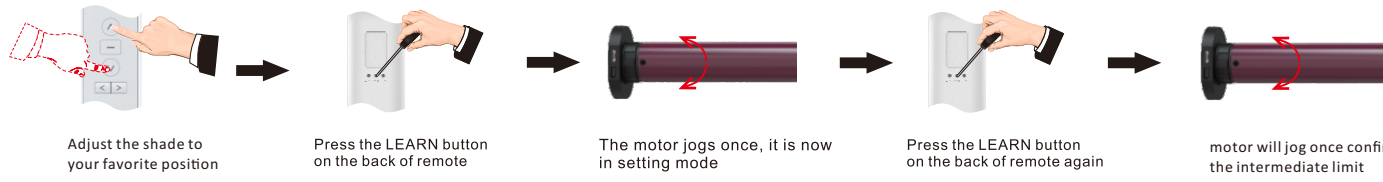
7. Bottom limit setting



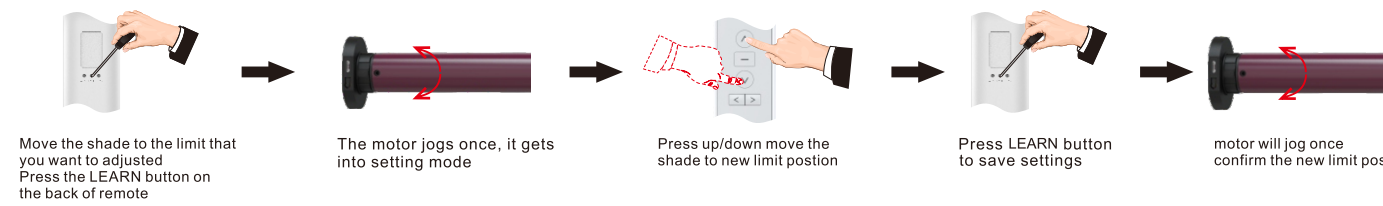
8. Other limit position setting

* If there's no any action within 30's, the motor will exit from limit position preparation automatically

You can set 4 limits between top and bottom limits

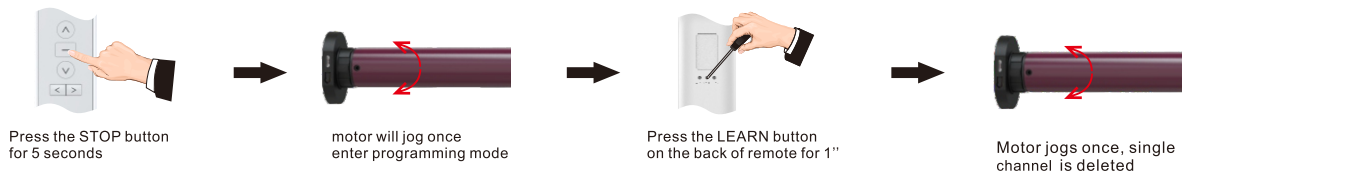


9. Limit position fine-tuning




10. Delete Single Channel program

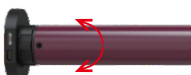
(if you want to remove one channel's setting, pls do as follow)



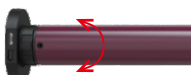
11.Delete the limit position tips: the first limit can't be deleted until you delete all the settings(restore to factory mode)



Let the shade run to the limit position which needs to be deleted, press LEARN for 7s




The motor jogs once after 1s then goes into setting mode




The motor jogs once again after 7s, the preset limit position is now deleted

12. Delete all settings (restore to factory mode) (Two methods, one on the remote, another one on motor head)


Method A




Press STOP of the programmed remote for 5s



motor will jog once enter programming mode




keep holding the LEARN button for 7s




motor will jog one time at the 1st second and jog two times at the 7th second. now motor delete all settings


Method B




press the PROG button for 1s motor head will flash red 1 time then release your hand



press the PROG button for 1s motor head will flash red 1 time then release your hand








keep holding the PROG for around 3s LED will flash red at the 1st second LED will flash red at the 3rd second and then release the hand



keep holding the PROG again for around 3s LED will flash red at the 1st second LED will flash red at the 3rd second and motor jog twice then release the hand

13. Reset motor Bluetooth * Make sure the interval between every actions less than 1s

when you receive your motor, usually you don't need to reset motor Bluetooth. Just open your APP and scan devices, the APP will automatically scan the Bluetooth motor around you. If your APP can't find the Bluetooth motor around you, then you can reset the motor Bluetooth. Motor will refresh the Bluetooth signal.



keep holding the PROG again for around 3s LED will flash red at the 1st second LED will flash GREEN at the 3rd second and motor slow flash green for 30s

press the PROG button for 1s motor head will flash red 1 time then release your hand

press the PROG button for 1s motor head will flash red 1 time then release your hand

press the PROG button for 1s motor head will flash red 1 time then release your hand

press the PROG button for 1s motor head will flash red 1 time then release your hand

Supplemental Instruction

- Max. 6 limit stop positions. (Upper limit/ Lower limit and 4 intermediate limit positions)
- When the first limit position is the up limit position, all other limit positions can only below this position; the same thing, when the first limit position is the down limit position, all other limit positions can only be set above this position. can't be delete
- Every limit position can be fine-turned or deleted separately (the first limit position can only be fine-tuned but can't be deleted separately. It can be deleted when delete all memories)
- Under the jog mode, short press the up or down button, motor jogs once. Press the up or down button for more than 1s, and the engine moves to the limit
- Under the continuous move mode, quickly press the up or down button twice on the transmitter, and the motor will go directly to the up or down limit stop position without stopping at the middle limit position.
- The light is red when charging and will turn to green when fully charged.

Battery shortage alarm:
The motor will step into jog mode and continuously beep when the battery capacity is below 6.8V, which means you must charge the motor now.

Trouble Shooting

Item	Problem	Matter	Shooting
1	The motor doesn't work and no any move	A. Power is cut off B. Shortage voltage protection C.Incorrect installation leads to motor stucking	A. Switch it on by button B. Start the motor after charging it for 6 hours C.Check and make sure all parts are installed properly
2	The motor stops suddenly during operation	A.Shortage voltage protection B.Protect the motor when encounter obstacle	A.The motor will resume to work after being charged B.Check if there is something stuck or overloading

APP control operation instruction



Smart Life - Smart Living
Smart Living
Volcano Technology Limited
#46 in Lifestyle
4.7 ★ 4.7 + 255.2K Ratings
Free · Offers In-App Purchases



Apple Store(iOS)



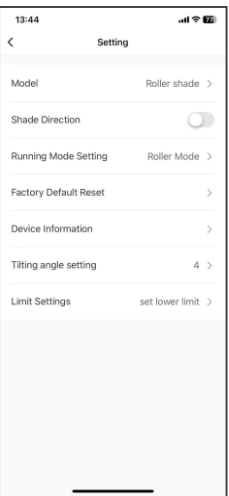
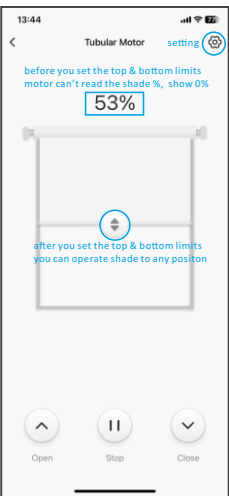
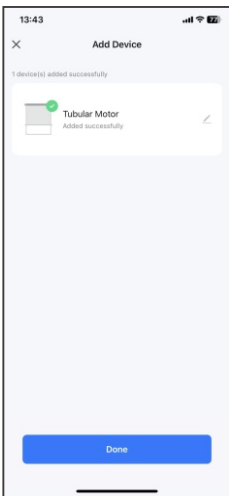
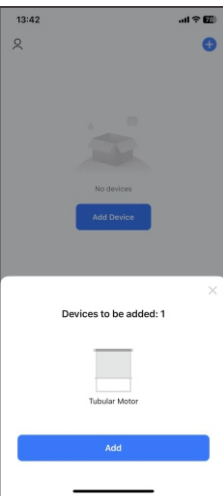
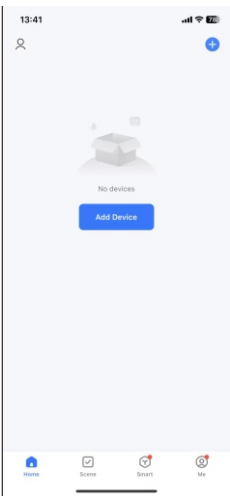
Google Play(Android)



Set up preparatory work:

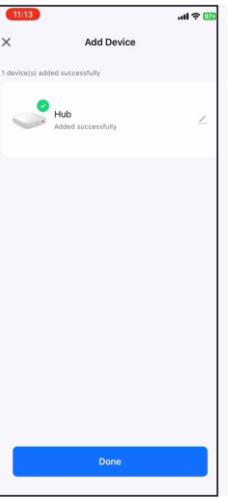
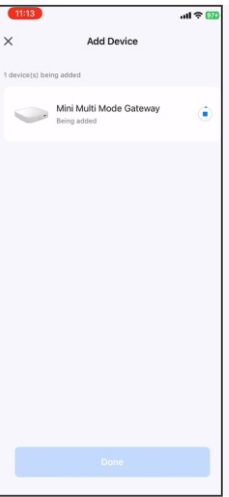
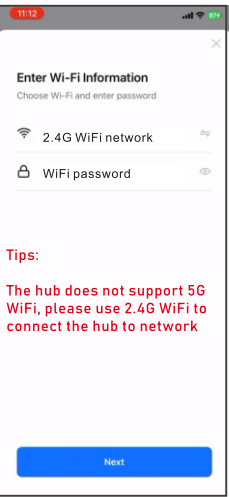
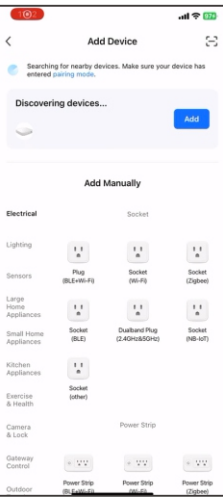
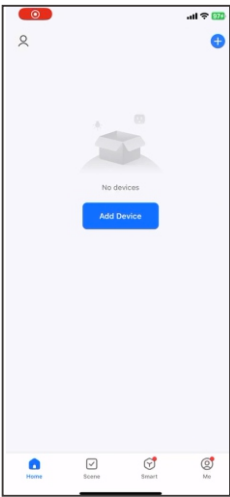
- Power on Multi-Mode Gateway hub
- Download and install "Smart Life" APP on phone

Bluetooth local control



- Register and login "Smart Life" APP
- Click "Add Device" the APP will search devices.
- When the APP discover BLE motor, choose "Add"
- Choose "Done" when motor successfully add to the APP. Now you can control motor
- now you can click "open" "stop" "close" to control your shade.
- Make sure to check your shade had set the limits with remote, if not you can also set the limits under setting menu. then you could slide the shade to any favorite position. Enjoy your smart BLE local control

Bluetooth remote control (To achieve remote access control shades outside your home, you must need to buy a Bluetooth Gateway Hub)



1. Register and login "Smart Life" APP

2. Click "Add Device", the APP will search devices.

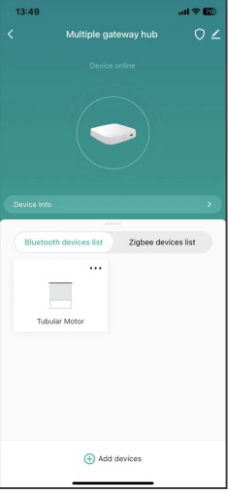
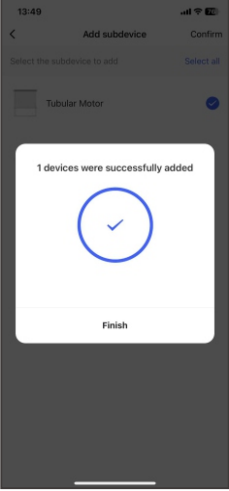
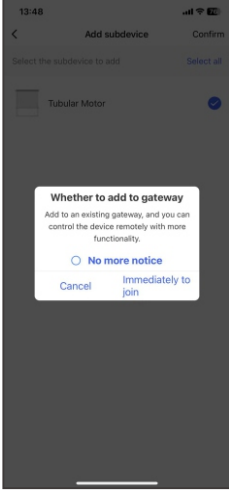
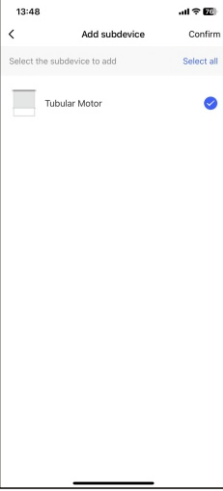
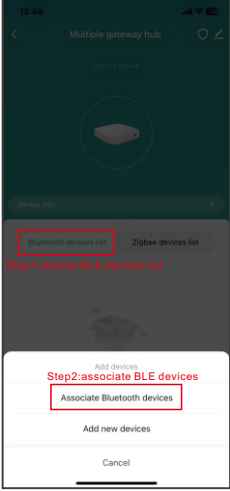
3. When the APP discover the hub, choose "Add"

4. Choose 2.4G WiFi and input WiFi password to enable the hub to network.

5. Click "Next", the APP will automatically add the hub.

When the hub successfully added, click "Done"

Tips:
The hub does not support 5G WiFi, please use 2.4G WiFi to connect the hub to network



- Choose "Bluetooth devices list"
- Click "Add Device"
- Choose "Associate Bluetooth devices"
- Choose the local control shades that you want to do remote access control
- Click "Immediately to join" then these shades will bonded to this hub
- Now you can control your shades outside home under the Bluetooth devices list